



DE LA PLAYA



Broadloom and area rugs
reminiscent of days by
the sea.

De La Playa draws its inspiration from elements such as ocean waves, fishing nets, boardwalk planks and driftwood texture. This sophisticated collection with a modern sensibility features four versatile patterns that can be used collectively in a space.

DE LA PLAYA

CONTENTS

Akumal

Nadela

Tulum

Sayulita

Area Rugs

Color Line

Specifications

ON COVER : **Nadela** Broadloom ND05 / Reflecting Pool

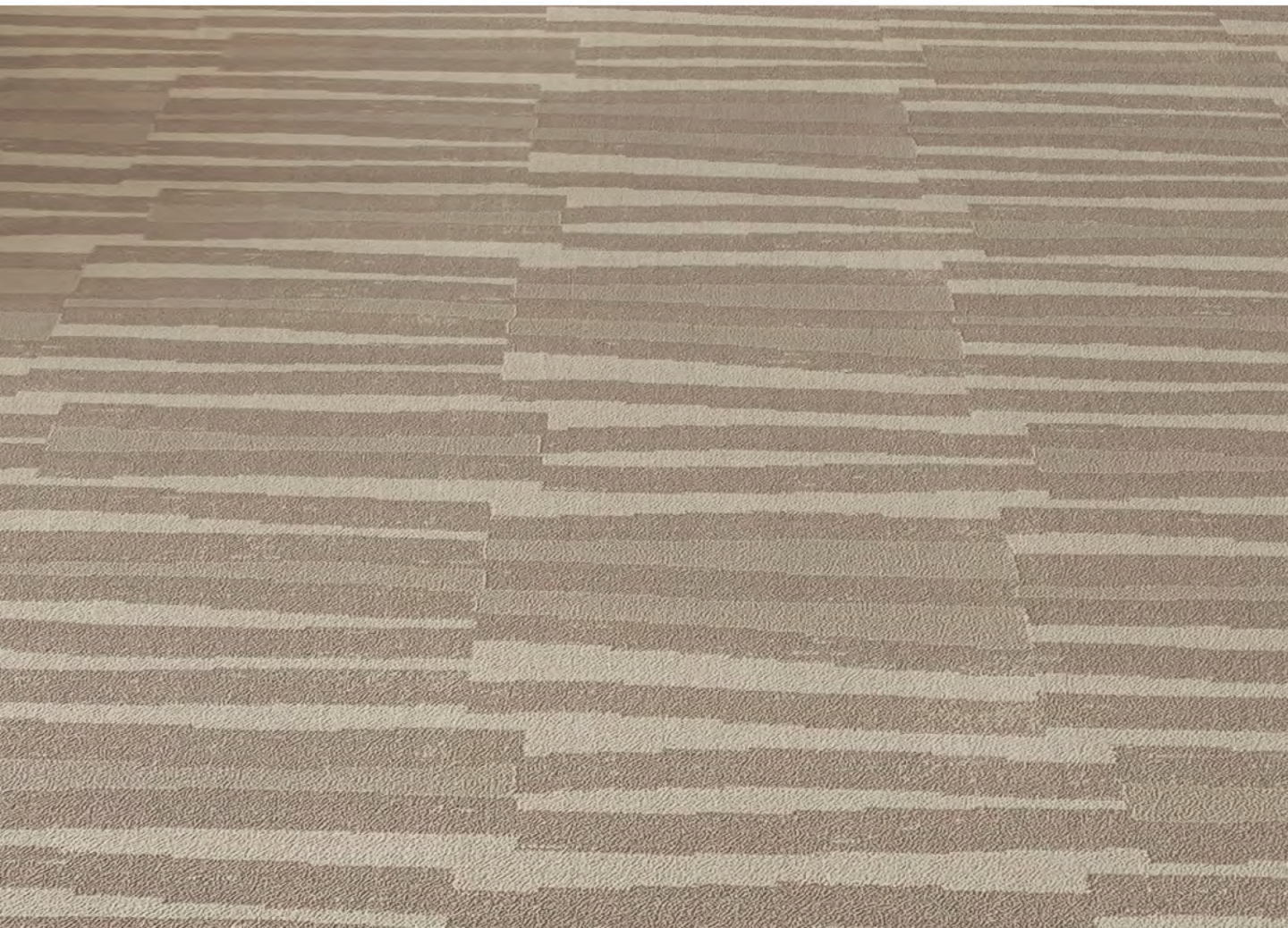
AKUMAL

DE LA PLAYA



Broadloom

Akumal AK09 / Warm Sand



Akumal AK09 / Warm Sand



DE LA PLAYA



NADELA

DE LA PLAYA



Broadloom

Nadela ND04 / Montego Bay



Nadeia ND04 / Montego Bay



DE LA PLAYA



Suitable for hospitality,
corporate and multi-family
environments.

De La Playa's plush **cut and loop construction**
produced on Visionweave technology with Antron
Legacy™ nylon makes these signature patterns
suitable for a variety of applications which include
corporate, multi-family and hospitality environments.

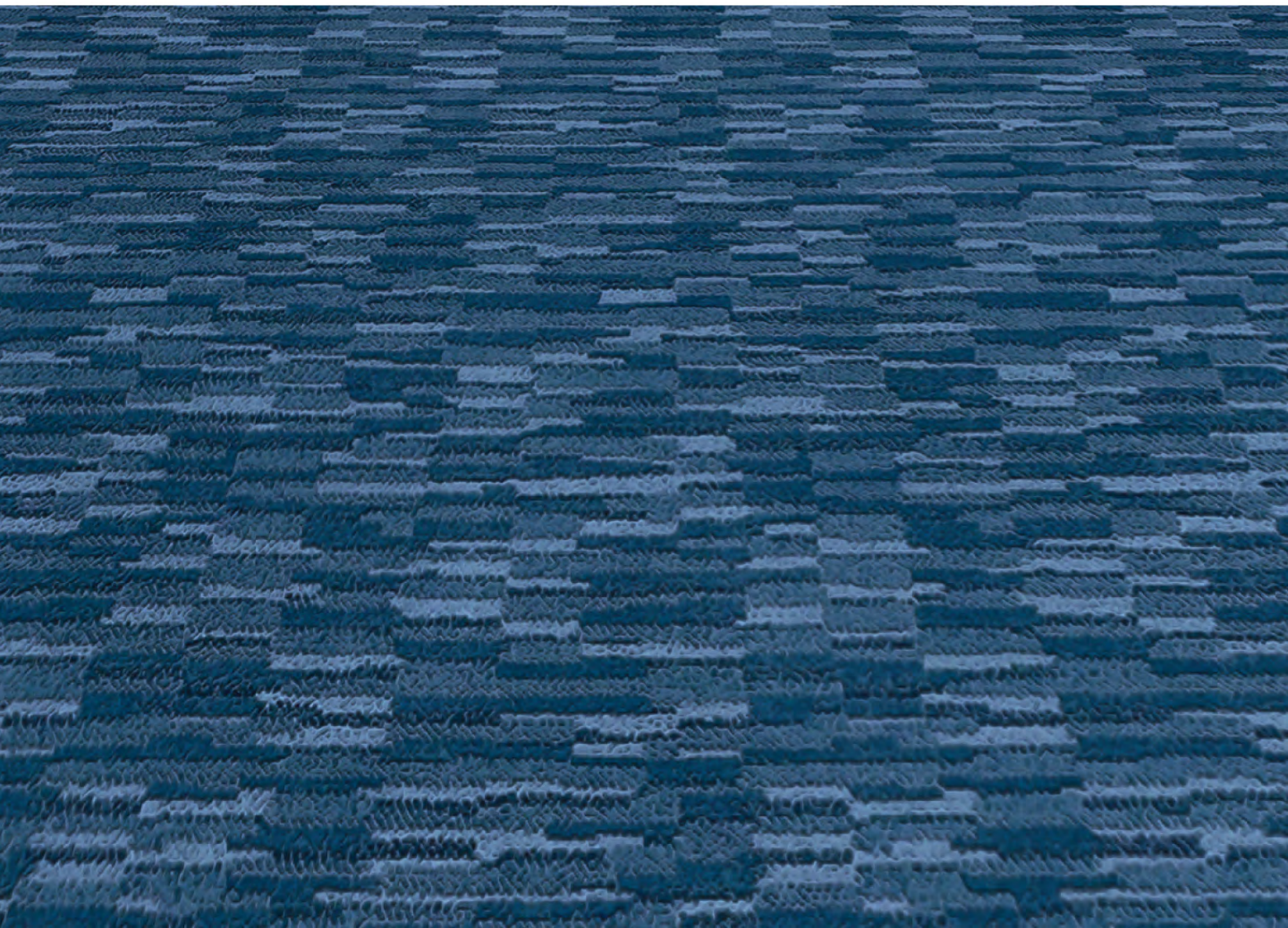
TULUM

DE LA PLAYA



Broadloom

Tulum LM03 / Deep Blue Coast



Tulum LM03 / Deep Blue Coast



Tulum LM03 / Deep Blue Coast



DE LA PLAYA

SAYULITA

DE LA PLAYA



Broadloom

Sayulita SY11 / Palm Thatch





Sayulita SY11 / Palm Thatch

Sayulita SY11 / Palm Thatch



DE LA PLAYA

Stunning Area Rugs

Atlas area rugs are available in a variety of shapes, sizes, edge finishes and backing options to complete the look. For more information please contact your Atlas Sales Associate or click the button above.

Akumal Area Rugs AK04 / Montego Bay



Shown below in **Nadela**

Printed images may not be an exact reproduction of the actual color. For the most accurate color representation, please **request a sample**.

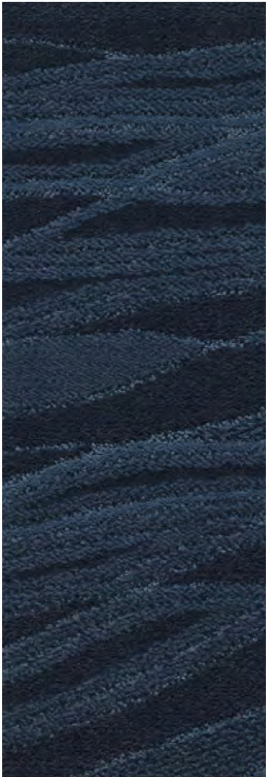
[Order Samples](#)



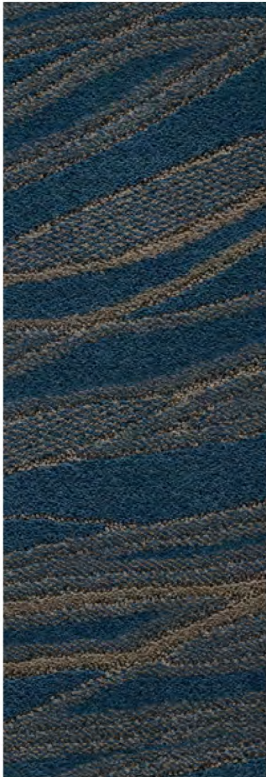
ND01
Midnight Sky



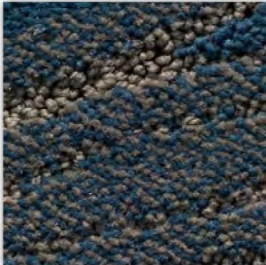
ND02
Fishing Net



ND03
Deep Blue Coast



ND04
Montego Bay



Shown below in **Nadela**

Printed images may not be an exact reproduction of the actual color.
For the most accurate color representation, please **request a sample**.

[Order Samples](#)



ND05
Reflecting Pool



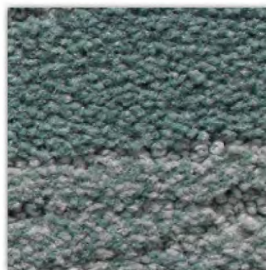
ND06
Gray Jetty



ND07
Sea Glass



ND08
Palm Tree



Shown below in **Nadela**

Printed images may not be an exact reproduction of the actual color.
For the most accurate color representation, please **request a sample**.

Order Samples



ND09
Warm Sand



ND10
Sand Dune



ND11
Palm Thatch



ND12
Moon Shell



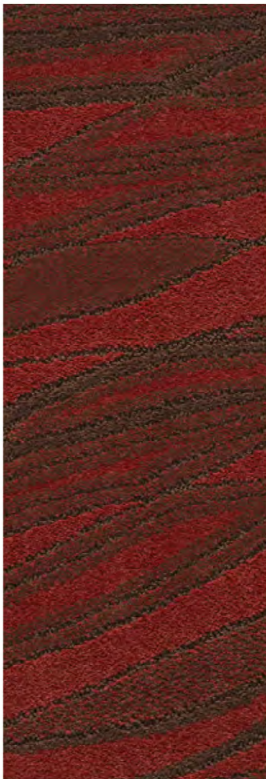
Shown below in **Nadela**

Printed images may not be an exact reproduction of the actual color.
For the most accurate color representation, please **request a sample**.

Order Samples



ND13
Bougainvillea



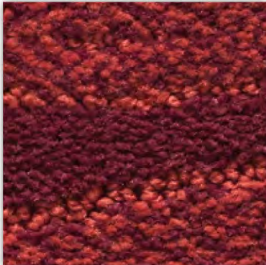
ND14
Red Hibiscus



ND15
Sea Urchin



ND16
Lava Rock



DE LA PLAYA

| | Akumal (AK) | Nadela (ND) | Sayulita (SY) | Tulum (LM) |
|--|-------------|-------------|---------------|------------|
|--|-------------|-------------|---------------|------------|

| | | | | |
|------------------------------|--|-------------|-------------|-------------|
| Yarn Content | Antron® Legacy™ type 6,6 nylon (SCS-EPP-01226, an Environmentally Preferable Product certified by SCS) | | | |
| Gauge | 1/8 | 1/8 | 1/8 | 1/8 |
| Tufted Yarn Weight | 35 oz/sq yd | 32 oz/sq yd | 36 oz/sq yd | 36 oz/sq yd |
| Average Yarn Pile Height | .307 | .297 | .328 | .298 |
| Average Yarn Density | 4,582 | 4,201 | 4,244 | 4,744 |
| Running Line & Custom Colors | 16 running line colors. Custom colors available at minimum yardage. Please contact your Atlas sales associate. | | | |

Broadloom

| | | | | |
|-----------------|---|---------------------|------------------------|------------------------|
| Backing | Permian Bac™ | Permian Bac™ | Permian Bac™ | Permian Bac™ |
| Pattern Repeat | 50" (W) x 28.8" (L) | 37.5" (W) x 30" (L) | 18.75" (W) x 19.2" (L) | 18.75" (W) x 20.8" (L) |
| Width | 12'6" | | | |
| Backing Options | All broadloom can be ordered with PERMIAN BAC™ MP, FIRMA CUSHION BAC™, ELEMENT CUSHION BAC™, TERRA CUSHION BAC™, TERRA CUSHION BAC™, FUSION BAC™ or CAMBRIAN LAMINATE BAC™. | | | |

Area Rugs

Area Rugs are available in a variety of shapes, sizes, backings and edge finishes. Please contact your sales associate for more information on the Atlas Area Rug Program or visit the Atlas website.

General Guidelines

| | |
|----------------------|--|
| Quality Assurance | All certified carpets of Antron® Legacy™ type 6,6 nylon meet strict performance and construction standards set by Invista to assure the highest quality carpets. The Antron® Legacy™ type 6,6 nylon polymer provides superior resistance to crushing, matting, and wear. |
| Soil Retardant | DuraTech®, a patented soil resistance technology, is only available on styles of Antron® type 6,6 nylon. |
| Static Control | Antron® Legacy™ type 6,6 nylon carries a limited lifetime antistatic protection warranty not to exceed 3.5kV. |
| Flammability Ratings | ASTM E668 Flooring Radiant Panel Test: Class I. ASTM E662 NBS Smoke Chamber Test: < 450 in the Flaming Mode. |
| Environmental | Complete details on contributions to LEED, CRI Green Label Plus, NSF/ANSI 140-2015, HPDs and EPDs can be found on the Atlas website in the Resources tab under Environmental. |
| Warranty | Antron® Legacy™ type 6,6 nylon carries a Limited 10-Year Wear Warranty. See written warranties. |
| ©Invista | All Rights Reserved. Antron® and the Antron® family of marks and logos are trademarks of INVISTA. |

Atlas

| | |
|------------------------|---|
| Los Angeles Showroom | 2200 Saybrook Avenue, Los Angeles, CA 90040 (800) 367-8188 |
| Chicago Showroom | TheMart (866) 527-9870 |
| New York City Showroom | New York Design Center (800) 223-0323 |
| atlas carpetmills.com | Visit us on-line at atlas carpetmills.com for additional product offerings, detailed specifications, installation instructions, maintenance and warranty information. |

