



Introducing
Magnetude™
THE MAGNETIC MODULAR FLOORING SYSTEM



Inspired



Inspired

Offered in both broadloom and 12" x 36" carpet tile patterns, intentionally restrained **Inspired** fulfills the dual purpose of subtle backdrop and hint of panache. The style *Ingenuity* achieves a subtle texture and visual interest with a small linear textural motif. *Insight* is a slightly larger hash mark design that is versatile enough to take center stage or play a supporting role for more ornate companions. From the essential greys, to playful pops of red and green, to serious blues, Inspired's 14 colorways feature contrasts that both whisper and shout.

Manufactured with Thrive® by Universal Fibers®, the most environmentally conscious solution-dyed carpet fiber in the world, Inspired's standard backing systems are Unitary for broadloom and Sustaina™ non-PVC, non-polyurethane for the carpet tile. Inspired carpet tile is also available with Magnetude, AtlasMasland's revolutionary backing system. With Magnetude, the carpet tile in this collection can be rearranged, removed, or reused to create design schemes based on a season, unique purpose or whim, providing unlimited post-installation design possibilities.

Magnetude™ Backing by AtlasMasland

Magnetude has made modular flooring truly modular, offering post-installation flexibility the entire life of the installation. Floors can be designed and redesigned again and again to not only create visual interest for the floor, but equally provide functional benefits such as wayfinding, social distancing, and branding.

VIEW INSPIRED:



LEARN ABOUT MAGNETUDE:



BROADLOOM **INSIGHT**
COLORS **06 MAC** AND **13 DAPPLED**

COVER IMAGE:

BROADLOOM **INSIGHT**
COLORS **02 EVENING** AND **06 MAC**



BROADLOOM **INGENUITY**
COLOR **13 DAPPLED**



BROADLOOM **INSIGHT**
COLORS **01 FOGGY AND 13 DAPPLED**



INSIGHT BROADLOOM
06 MAC COLOR



CARPET TILE **INGENUITY**
COLORS **02 EVENING, 06 MAC AND 14 DOVE**
INSTALLATION **MONOLITHIC** 



INSTALLATION **MONOLITHIC** 



INSTALLATION **MONOLITHIC** 

RECONFIGURE WITH MAGNETUDE



CARPET TILE **INSIGHT**
COLOR **06 MAC**
INSTALLATION **ASHLAR** 



INGENUITY CARPET TILE
13 DAPPLED COLOR
ASHLAR INSTALLATION



INGENUITY BROADLOOM
13 DAPPLED AND **14 DOVE** COLORS



INGENUITY BROADLOOM
06 MAC COLOR



**Inspired carpet tile is available with AtlasMasland's Magnetude backing system*

INTRODUCING
Magnetude™
 THE MAGNETIC MODULAR FLOORING SYSTEM

01_Imagine

Imagine a truly flexible backing system that enables you to realize your designs and adapt to meet changing needs and preferences. Introducing Magnetude, the magnetic modular flooring system that allows you to re-imagine your space and mix things up.

02_Create

Create design configurations that flex to meet the demands of the environment, including branding, wayfinding, zone definition, or just visual fun. With Inspired 12" x 36" carpet tile, you have 14 distinct colorways with which to play and design.

03_Order

Once you've narrowed down your choices, it's time to select your pieces and place your order. Let us know which colors and patterns you desire to create your dynamic space. Make sure to contact your sales representative with any questions.

04_Install

With the ease of placing puzzle pieces, Magnetude flooring comes together like the clap of your hands. Thanks to their uniquely magnetic backing, **no adhesives are required** and the modular pieces can be changed and reconfigured after the initial installation.

05_Reconfigure

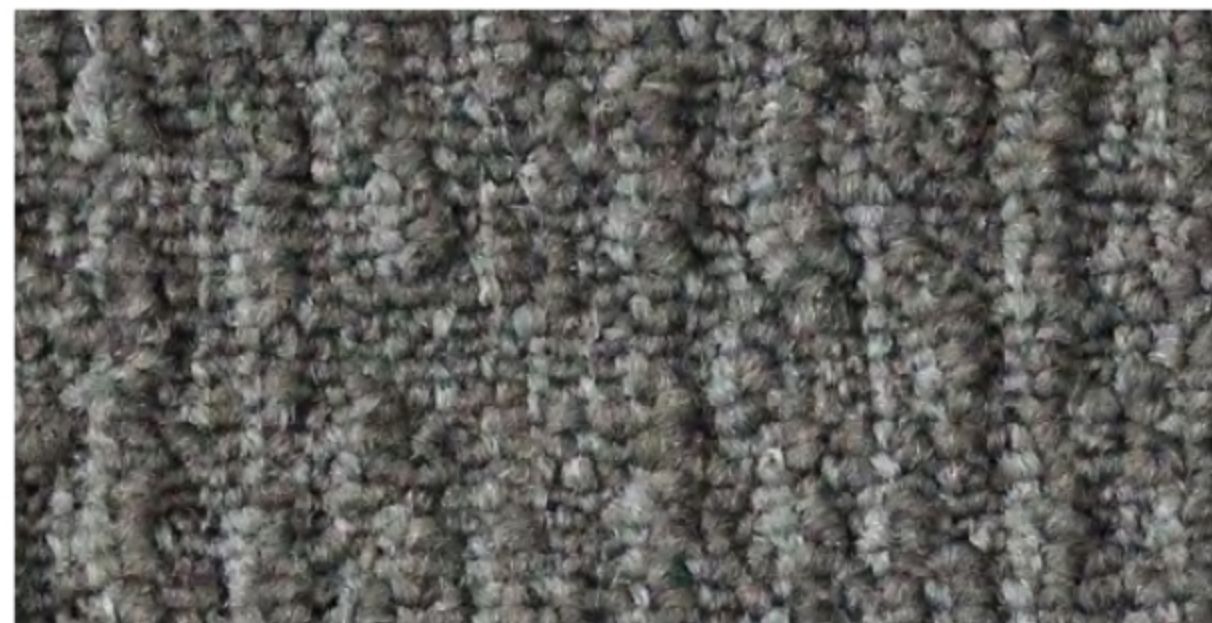
As a magnetic modular flooring system, the pieces can be rearranged, removed, or reused. Create new design schemes inspired for a unique purpose, change in season, or even a whim. The reconfiguration possibilities allow you to re-imagine your space without major renovation.



How does Magnetude work?

Ferrite in the LVT and carpet tile backing creates a magnetic connection with a special underlayment, designed to work with modular products. The magnetic connection is unique to these products so it won't form a magnetic connection with other metallic materials. **Truly revolutionary.**

COLOR LINE SHOWN IN INGENUITY



01 Foggy



02 Evening



03 Moonlit



04 Night



05 Speckled



06 Mac



11 Gilded



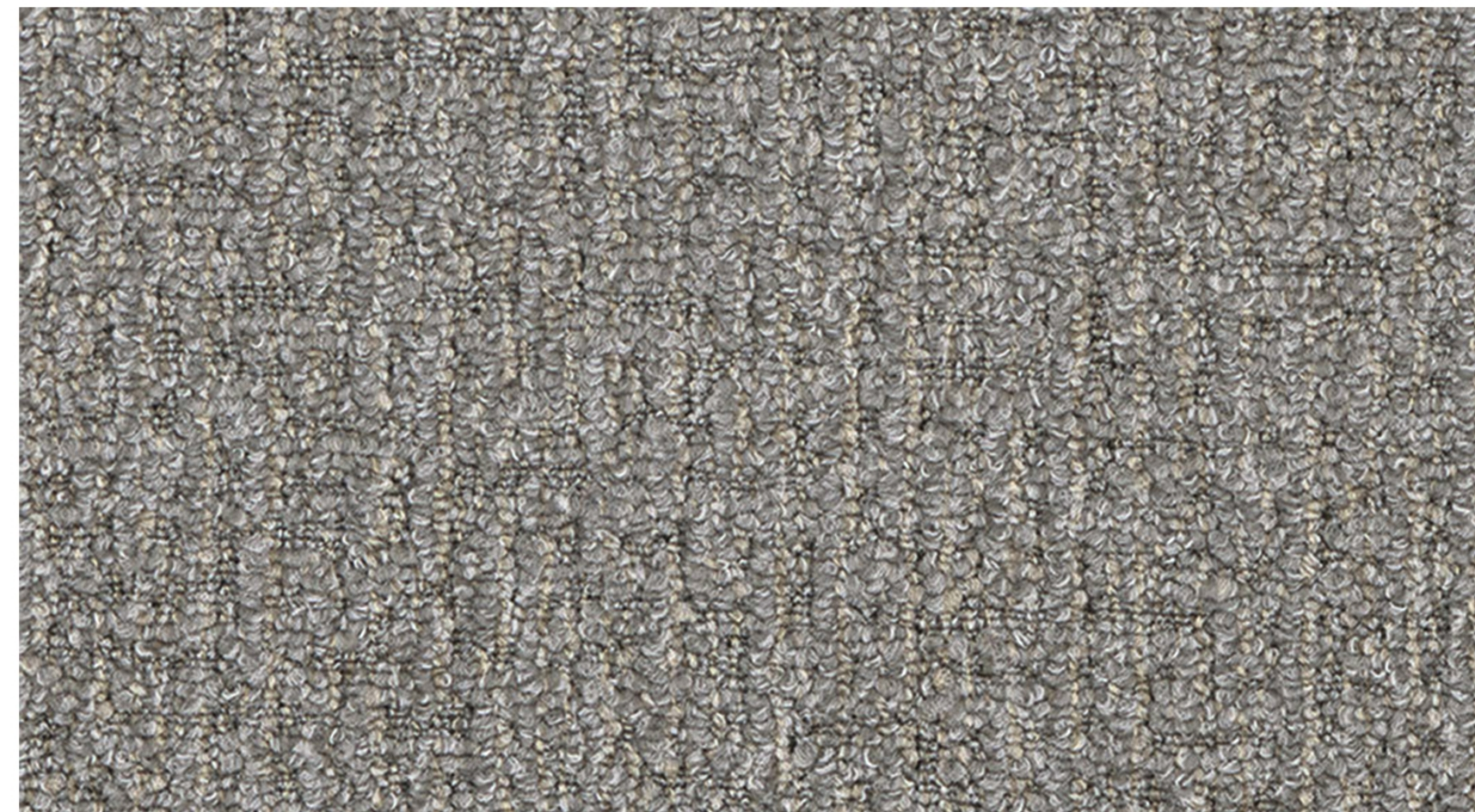
08 Peacock



13 Dappled



10 Granola



14 Dove

Inspired is offered in both broadloom and carpet tile. Inspired 12" x 36" carpet tile comes with standard Sustaina backing or our optional Magnetude backing system. For the most accurate color representation, please request a sample by contacting Customer Service at 1-888-633-4770 or by visiting atlasmasland.com.

Sustaina™

PVC-free backing by AtlasMasland

It's what supports our products that makes them kind and beautiful.

As part of our commitment to designing better human experiences, AtlasMasland is transitioning all carpet tile products to our Sustaina PVC-free backing system.



Thrive®

UNIVERSAL FIBERS

The Most Sustainable Nylon 6,6 Carpet Fiber in the World

Thrive® stands alone as the most environmentally conscious solution-dyed high performance nylon 6,6 carpet fiber in the world with the highest level of recycled material, the lowest CO₂ emission and built-in encapsulated stain resistance.

Thrive® aligns with a variety of environmental initiatives including LEED® v3, LEED® v4, Living Building Challenge®, WELL Building Standard®, Green Globes®, BREEAM® and the 2030 Challenge for Products. All with the added assurance of independent GreenCircle® certification.

Inspired

Construction

Ingenuity

Insight

Fiber Content	Thrive® by Universal Fibers®, Nylon 6,6 with 75% recycled content and Permanent Stain Resistance	
Construction	Patterned Loop	
Dye Method	Solution Dyed	
Gauge	1/12	
Pile Height	.219"/.156"/.094" (5.56mm/3.96mm/2.39mm)	

Product manufactured utilizing pre-consumer and post-consumer recycled content. Please see environmental specifications for additional information. Specifications may vary slightly over the life of a product. For current specifications, please visit atlasmasland.com

Broadloom

Style Number	7160	7161
Pattern Repeat	.50"W x random (1.27cm x random)	Random
Primary Backing	Woven Polypropylene	
Secondary Backing	Woven Polypropylene with Unitary	
GLP Certification	GLP1678	
Warranty	Limited 10-year Wear Warranty	

Carpet Tile

Style Number	T7160	T7161
Tile Size	12" x 36" (30.48cm x 91.44cm)	12" x 36" (30.48cm x 91.44cm)
Primary Backing	Synthetic	
Secondary Backing	Sustaina™ (PVC-free polyester non-woven felt)	
Total Thickness	.282" (7.16mm)	
GLP Certification	GLP100162	
Warranty	Lifetime Commercial Limited Warranty	

Performance

Environmental	Meets the standards for the Carpet & Rug Institute's Indoor Air Quality Green Label Plus Carpet Testing Program 3rd party certified PLATINUM to the NSF/ANSI 140 Sustainability Assessment for Carpet (tile) 3rd party certified GOLD to the NSF/ANSI 140 Sustainability Assessment for Carpet (broadloom)
Flammability Rating	Flooring Radiant Panel ASTM E-648 and/or NFPA 253 Greater than 0.45 watts/CM ² Class 1 (EU) CFL S 1 (broadloom), BFL S 1 (tile) Surface Flammability of Carpets and Rugs (16 CFR Chapter II Subchapter D, Part 1630 CPSC FF 1-70) also referenced as ASTM D-2859
Smoke Density	Passes NBS Smoke Chamber Test ASTM E-662 (flaming mode)
Colorfastness to Light	4.0 or better
Static Rating	Less than 3.5 kV. Antistat warranted for the life of the carpet



Inspired coordinates with Contemporary Woods LVT and other running line products. Please visit atlasmasland.com for additional color options.

Slight variations between sample swatches and production goods are to be expected and are considered normal. Likewise, such variations will occur between production goods of different dye lots. Chair pads are recommended to enhance the aesthetic value and longevity of the product.

All AtlasMasland designs are protected under the U.S. Copyright Act of 1976. Any unauthorized duplication or approximation of an AtlasMasland design constitutes copyright infringement in violation of federal law. ©4/2021 AtlasMasland™.

For reclamation of this book, please contact your AtlasMasland contract manager.

Order samples: **1.888.633.4770** or atlasmasland.com

P.O. Box 11467 Mobile, AL 36671 | 716 Bill Myles Drive Saraland, AL 36571

