



LIVING QUARTERS | UNITS

Chill & Floored

atlasmasland.com



© **Resume**
SHOWN IN **01 GOOD BOOK**

 **Floored**
SHOWN IN **DW003 FRENCH VANILLA**



© **Repair**
SHOWN IN **08 FLANNEL PAJAMAS**

 **Floored**
SHOWN IN **DW006 ROCKY ROAD**

Bring a sense of ease to every experience.

Created for multi-family interiors, Living Quarters is a coordinated duo of soft-surface **Chill** and **Floored LVT** that provides harmony and comfort to connect you to your dwelling space. Presented in soothing, neutral tones, Chill's **Repair** and **Resume** relaxed styles create a sense of repose in any room they occupy, while Floored features the sophisticated visual texture of natural wood.

Check out our collections at atlasmasland.com and discover how we are designing better experiences for interior environments.


COVER IMAGE: **Repair** SHOWN IN **02 WORD SEARCH** AND **Floored** SHOWN IN **DW005 CHOCOLATE CHIP**



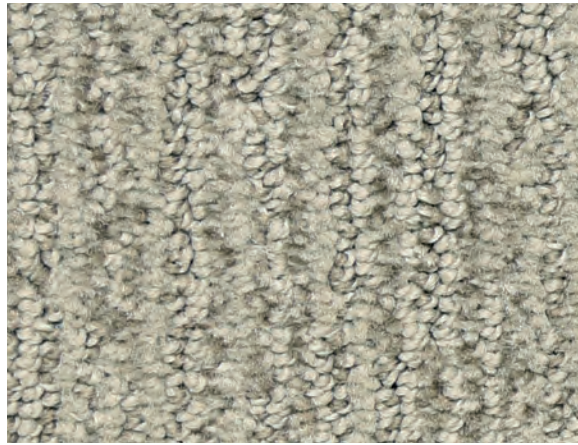
© Resume
SHOWN IN 07 SCENTED OILS

 **Floored**
SHOWN IN DW002 ALMOND FUDGE

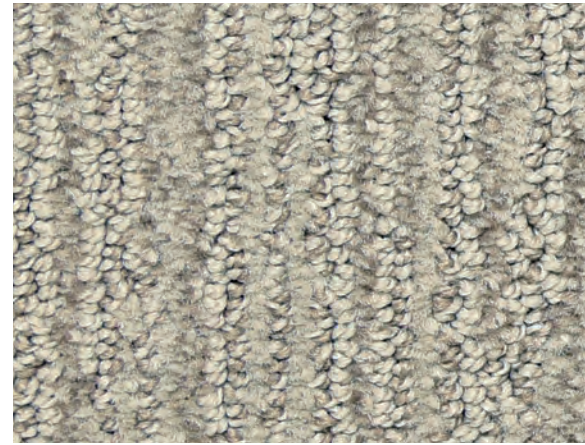


 **Floored**
SHOWN IN DW005 CHOCOLATE CHIP

Chill Color Line SHOWN IN 7138 REPAIR



31801 GOOD BOOK



31802 WORD SEARCH



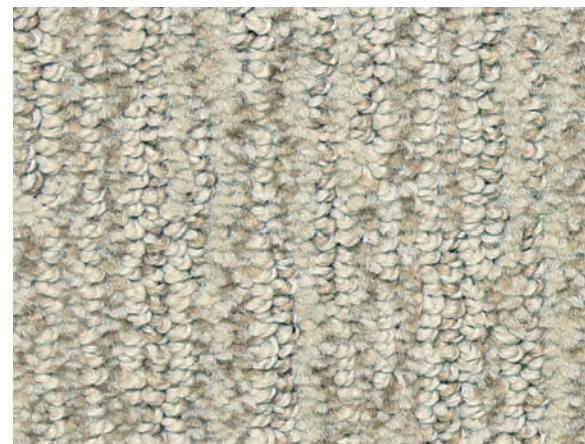
31803 CHANNEL SURFING



31804 MOVIE NIGHT



31805 EASY LISTENING



31806 BUBBLE BATH



31807 SCENTED OILS



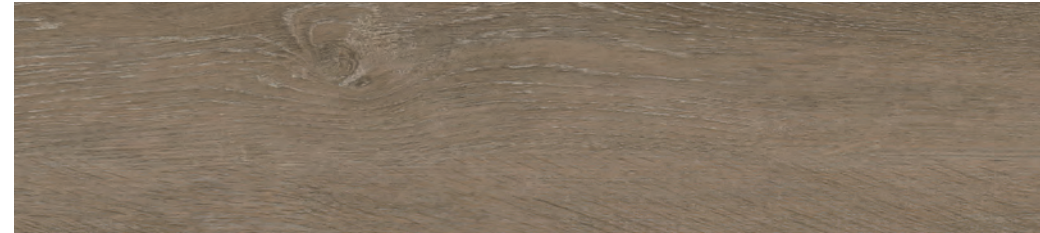
31808 FLANNEL PAJAMAS

color line

Floored Color Line



DW001 COOKIE DOUGH



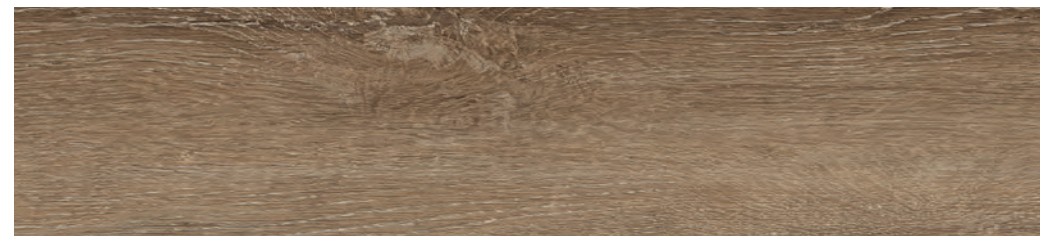
DW002 ALMOND FUDGE



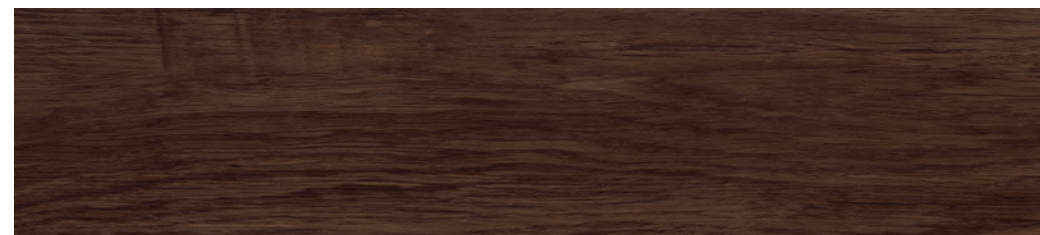
DW003 FRENCH VANILLA



DW004 BANANA SPLIT



DW005 CHOCOLATE CHIP



DW006 ROCKY ROAD



DW007 BUTTERED PECAN

The Living Quarters color palette features a full range of enhanced neutrals that easily coordinate with any design scheme while bringing tranquility and beauty to every room experience.

From the comfortable informality of Flannel Pajamas, to the carefree rejuvenation of Bubble Bath and everything in between, Chill and Floored are well coordinated to provide easy flooring solutions for your specific multi-family residential environment.



For the most accurate color representation, please request a sample by contacting Customer Service at **1-888-633-4770** or by visiting **atlasmasland.com**.



AtlasMasland is motivated by the aspirations of people and businesses who wish to create unique and positive experiences with every environment they pursue.

A leading manufacturer of technically sophisticated flooring solutions, AtlasMasland draws on a heritage of craftsmanship that spans more than 150 years.

Whether through our statement-making patterns or customized programs that are tailored to taste, AtlasMasland persistently innovates to inspire our customer's creative freedom in every way.

Chill

Construction

	Repair	Resume
Style Number	7138	7139
Fiber Content	100% BCF nylon 6,6	
Construction	Cut / Loop	
Pattern Repeat	16"W x 28"L (40.64cm x 71.12cm)	18"W x .11"L (45.72cm x 27.94cm)
Dye Method	Continuous Dyed	
Gauge	1/8	
Pile Height	.375"/.438" (9.52mm/11.13mm)	
Primary Backing	Polypropylene	
Secondary Backing	Action Bac	
GLP Certification	GLP100079	

Specifications may vary slightly over the life of a product. For current specifications, please visit atlasmasland.com.

Performance

Environmental	Meets the standards for the Carpet & Rug Institute's Indoor Air Quality Green Label Plus Carpet Testing Program
Flammability Rating	Flooring Radiant Panel ASTM E-648 and/or NFPA 253 Greater than 0.45 watts/CM ² Class 1 (EU) CFL S 1 Surface Flammability of Carpets and Rugs (16 CFR Chapter II Subchapter D, Part 1630 CPSC FF 1-70) also referenced as ASTM D-2859
Smoke Density	Passes NBS Smoke Chamber Test ASTM E-662
Colorfastness to Light	4.0 or better
Static Rating	Less than 3.5 kV. Antistat warranted for the life of the carpet
Warranty	Limited 10-year Wear Warranty

Floored LVT

Product Specifications

Style	8444
Construction	High Performance Luxury Vinyl Tile (SPC)
Edge Detail	Micro-beveled Edge
Finish	Ironclad
Embossing	Antique Wood
Wear Layer	12 mil (0.3mm)
Layers	0.126" (3.2mm) Extruded Solid Polymer Core (SPC) 0.039" (1.0mm) Pre-Attached IXPE Underlayment
Overall Thickness	0.165" (4.2mm)
Installation Type	Click
Warranty	10 year Commercial / 15 year Residential *

Packaging

Tile Size	5.9" x 48.03" (15cm x 122cm)
Pieces per box	15
Square feet per box	29.547 (2.745 m ²)
Coverage/Piece	1.97 Sq. Ft. (0.183 m ²)
Coverage/Carton	29.547 Sq. Ft. (2.745 m ²)
Coverage/Pallet	48 Cartons (1418.256 Sq. Ft. / 131.76 m ²)
Coverage/Container	20 Pallets (28365.29 Sq. Ft. / 2635.2 m ²)

Testing

TEST	STANDARD	MINIMUM REQUIREMENT	RESULTS
Critical Radiant Flux	ASTM E648	≥0.45 Watts/cm ² (Class 1)	Passes
Smoke Density	ASTM E662	≤450	Passes
Slip Resistance	ASTM D2047	N/A	≥0.85 (Dry)
Static Load	ASTM F970	≤0.005"; 250 lbs. load	Passes
Static Load Limit	SIM Test	Test to Limit (±0.005")	Passes
Chemical Resistance	ASTM F925	No more than slight change ΔE <	Passes
Resistance to Heat	ASTM F1514	8 avg. max	Passes
Resistance to Light	ASTM F1515	ΔE < 8 avg. max	Passes
Abrasion Resistance	ASTM D4060	N/A	≥5,600 Cycles
Impact Sound Transmission**	ASTM E492	Impact Insulation Class (IIC) ≥50	IIC 64
Airborne Sound Transmission Loss**	ASTM E90	Sound Transmission Class (STC) ≥50	STC 60

* See warranty documentation for full details of terms and conditions ** Tested over 6" concrete slab with drop-ceiling.

Slight variations between sample swatches and production goods are to be expected and are considered normal. Likewise, such variations will occur between production goods of different dye lots. Chair pads are recommended to enhance the aesthetic value and longevity of the product.

All AtlasMasland designs are protected under the U.S. Copyright Act of 1976.

Any unauthorized duplication or approximation of an AtlasMasland design constitutes copyright infringement in violation of federal law. ©11/2020 AtlasMasland™.

Order samples: **1.888.633.4770** or atlasmasland.com

P.O. Box 11467 Mobile, AL 36671 716 Bill Myles Drive Saraland, AL 36571

