



Natural Elements Too

atlasmasland.com

Nature-inspired experiences, by design.

Natural Elements Too brings the peace and positivity of the outdoors inside with the nature-inspired patterns **Air Too**, **Earth Too**, **Fire Too** and **Water Too**. With a versatile scale of organic patterns and an elegant neutral color palette, the styles in this collection work independently or in harmony to translate tranquility and serenity in interior spaces. Manufactured with Thrive® by Universal Fibers®, the most environmentally conscious solution-dyed carpet fiber in the world, and Sustaina™, a non-PVC, non-polyurethane, recycled backing system, Natural Elements Too is one of the most sustainable modular carpet collections in the marketplace.


Check out our collections at atlasmasland.com and discover how we are designing better human experiences for interior environments.

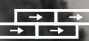
Products Shown

 CARPET PLANK

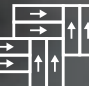
 LVT

Installation Methods Shown

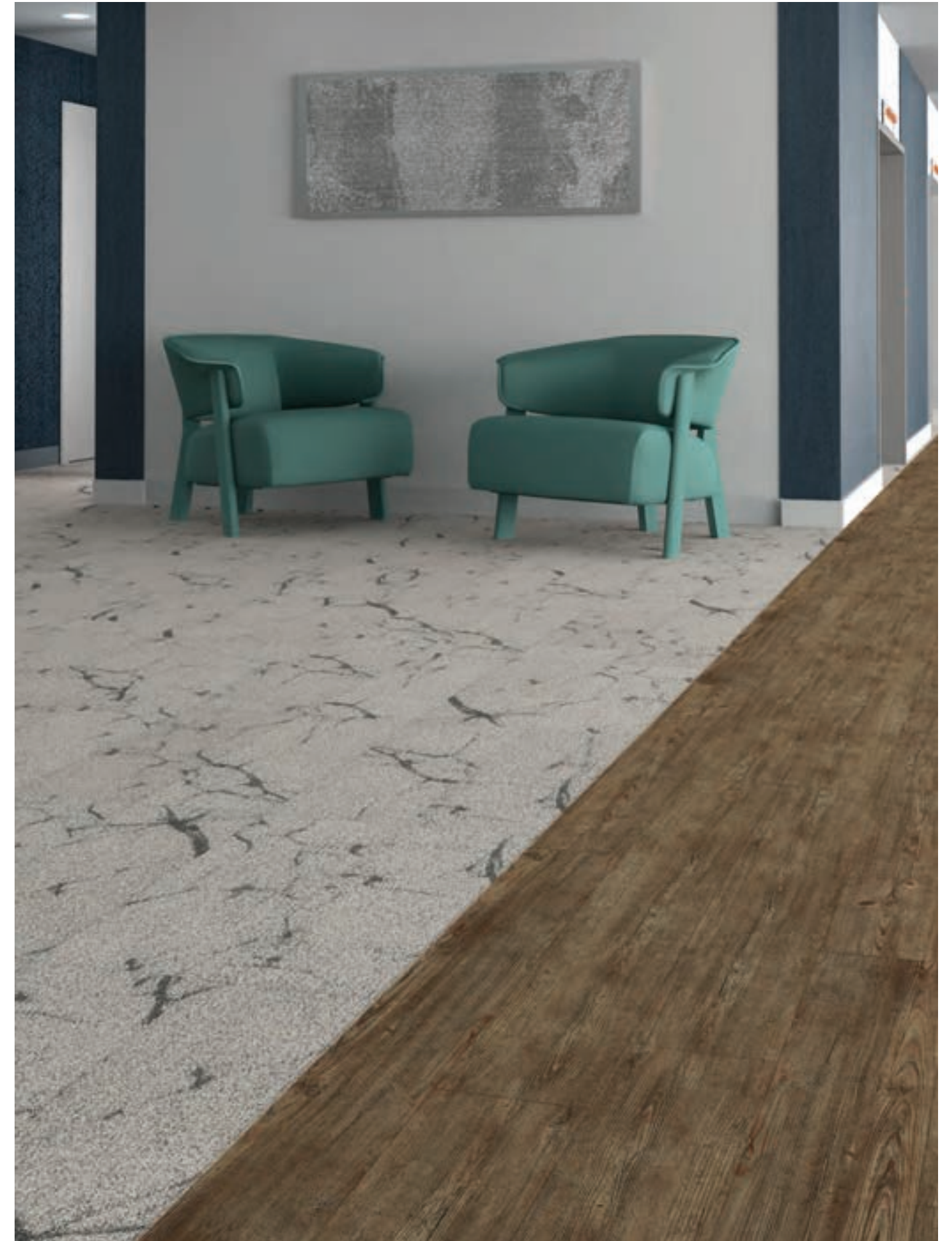
 MONOLITHIC

 ASHLAR

 HERRINGBONE

 DOUBLE HERRINGBONE

View Natural Elements Too:

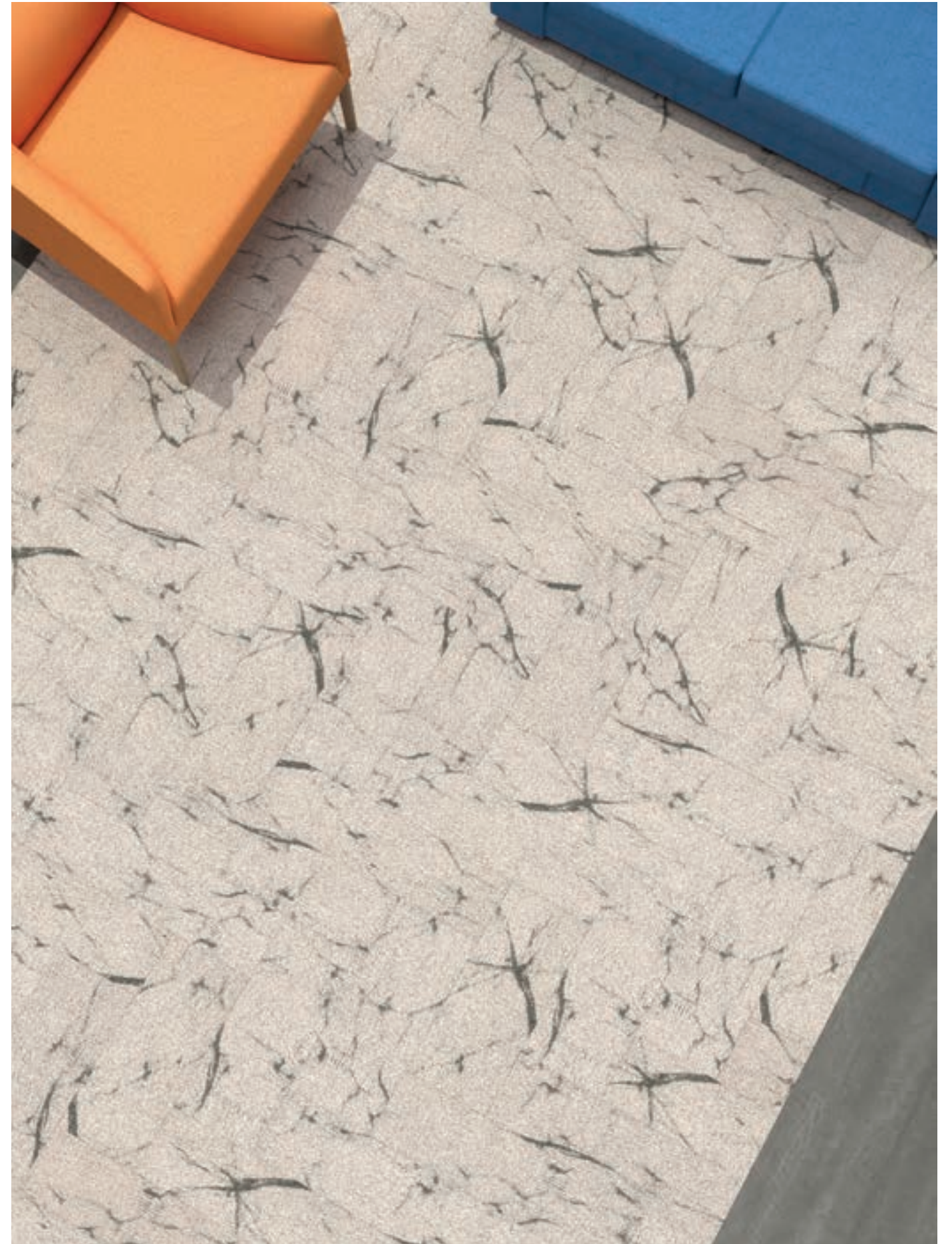
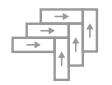


 **Air Too** AND **Fire Too** SHOWN IN 21 EVENING SKY / HERRINGBONE



 **Calibré** SHOWN IN A5015 BLACK ONYX

 **Air Too** SHOWN IN 18 HAZY MORNING / HERRINGBONE



 **Calibré** SHOWN IN A5015 BLACK ONYX



Calibré SHOWN IN W10 3 CAFFÉ MOCHA



Earth Too SHOWN IN 15 LIGHTNING STRIKES / ASHLAR



Earth Too SHOWN IN 18 HAZY MORNING / MONOLITHIC



ambro 015 BLACK ONYX

Fire Too SHOWN IN 18 HAZY MORNING / ASHLAR

Fire Too SHOWN IN 21 EVENING SKY / ASHLAR



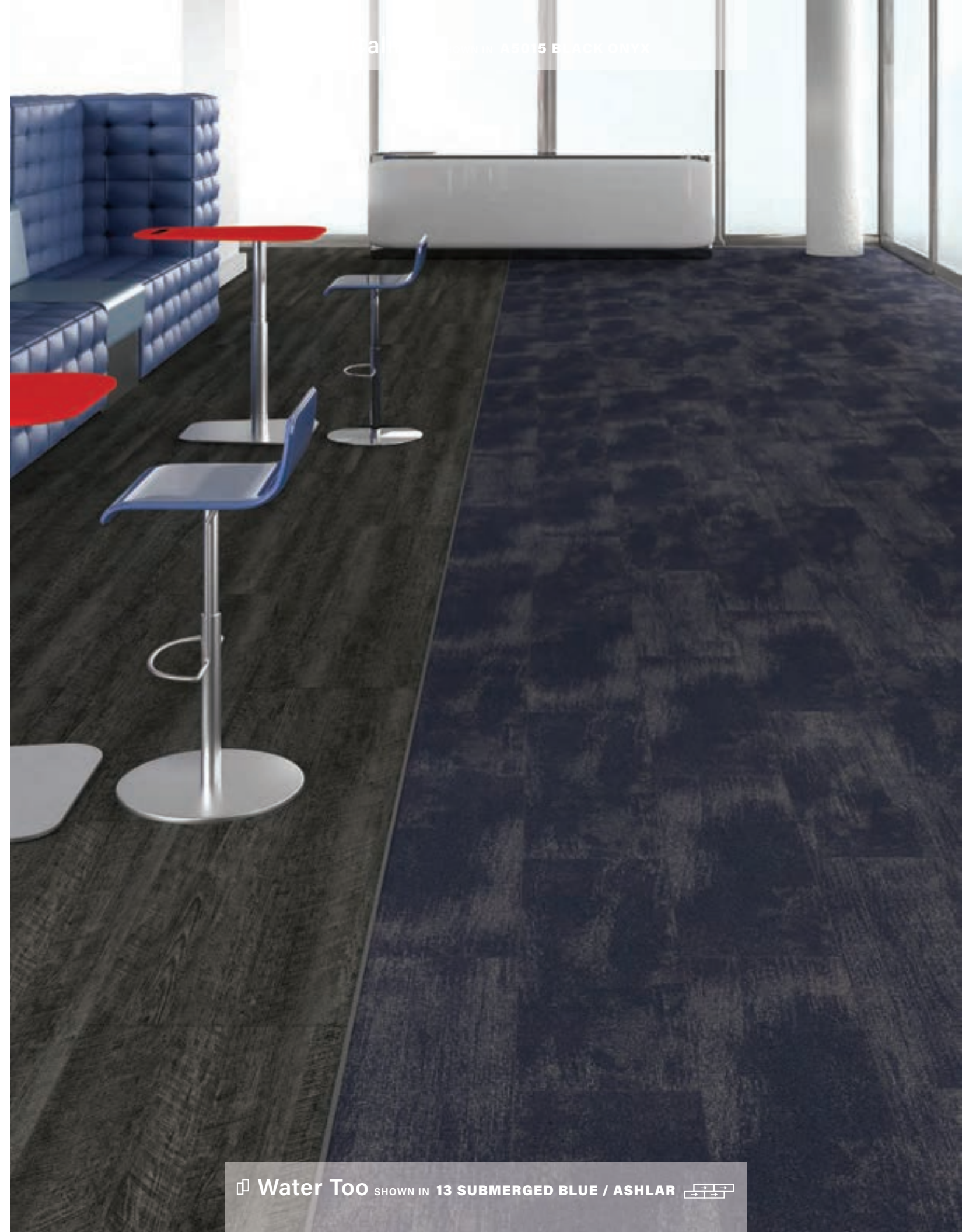
Calibré SHOWN IN A5009 PORPOISE

Fire Too SHOWN IN 15 LIGHTNING STRIKES / ASHLAR





also available in ASOL5 BACK ONLY



Water Too SHOWN IN 13 SUBMERGED BLUE / ASHLAR



Water Too SHOWN IN 18 HAZY MORNING / ASHLAR 



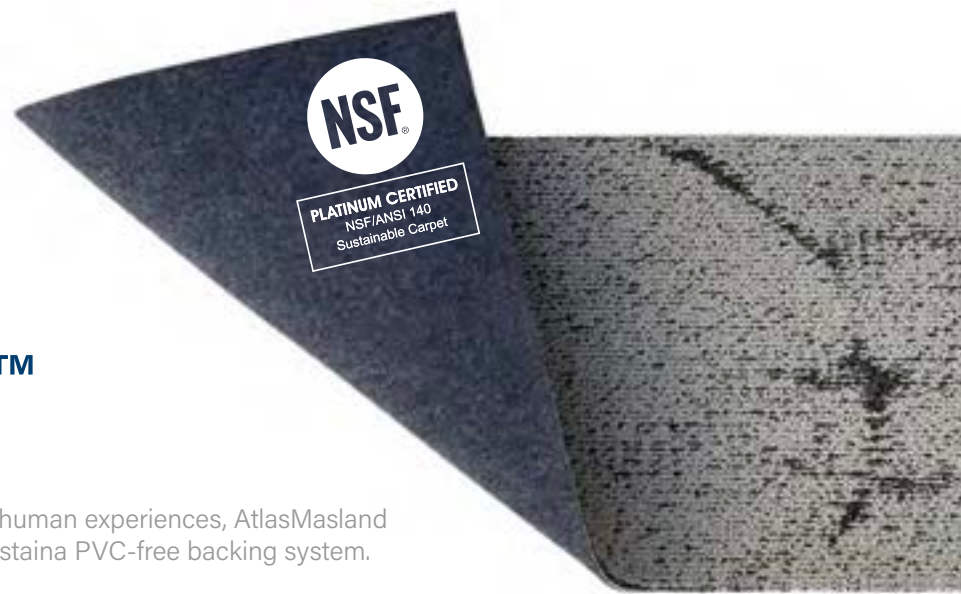
Water Too SHOWN IN 18 HAZY MORNING / MONOLITHIC 

It's what supports our products that makes them kind and beautiful.

Sustaina™

PVC-free backing by AtlasMasland

As part of our commitment to designing better human experiences, AtlasMasland is transitioning all carpet tile products to our Sustaina PVC-free backing system.



SUSTAIN

Sustaina doesn't contain PVC, polyurethane, or Red List chemicals. Sustaina-backed products are 3rd-party certified Platinum to the NSF/ANSI 140 Sustainability Assessment for carpet.



RECYCLE

Sustaina-backed products are constructed with significant recycled content - up to 82% based on face fiber.



BREATHE

Sustaina allows moisture vapor to transfer through the product which contributes to a healthier environment. Sustaina-backed products can be installed on high moisture content slabs.



SAVE

Sustaina-backed products minimizes floor prep required when installing over existing broadloom adhesive, saving time and money.

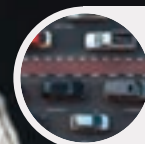
Thrive®



The Most Sustainable Nylon 6,6 Carpet Fiber in the World

Thrive® stands alone as the most environmentally conscious solution-dyed high performance nylon 6,6 carpet fiber in the world with the highest level of recycled material, the lowest CO₂ emission and built-in encapsulated stain resistance.

Thrive® aligns with a variety of environmental initiatives including LEED® v3, LEED® v4, Living Building Challenge®, WELL Building Standard®, Green Globes®, BREEAM® and the 2030 Challenge for Products. All with the added assurance of independent GreenCircle® certification.



Carbon Offset Benefit:
630,000 lbs Per Year*
Offsetting 358 commuters per year



Carbon Offset Benefit:
13,125 Trees Per Year*
Nearly all trees in Central Park, NYC

*Assumes annual carpet production of 100,000 square yards.
Fiber weight, 16oz / sq yd.

Like nature, the Natural Elements Too color palette is both powerful and gentle. Crisp neutral shades provoke a bond with nature that promotes inspired interiors.

COLORS SHOWN IN T7168 EARTH:



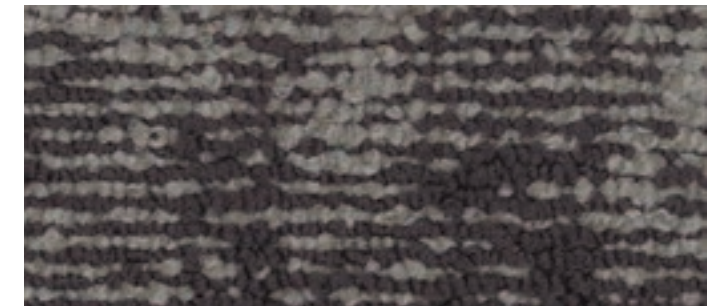
11 Smokey Grey



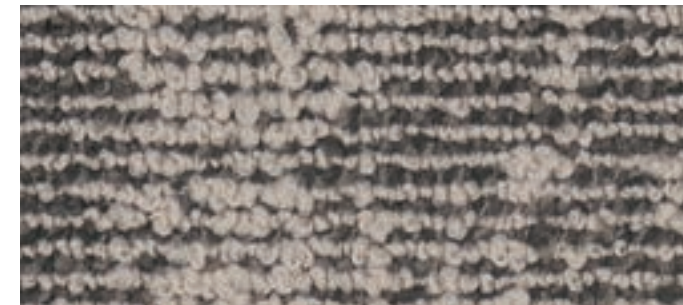
13 Submerged Blue



15 Lightning Strikes



16 Thunder Dome



18 Hazy Morning



20 Sand Dunes



21 Evening Sky



22 Open Fields

For the most accurate color representation, please request a sample by contacting Customer Service at **1-888-633-4770** or by visiting atlasmasland.com.



To inspire design creativity, AtlasMasland never stops innovating. From inception to final product, our designs are pursued with one goal in mind: enhance the experience. Through statement-making patterns, easily customizable flooring solutions or unique products developed to preserve our planet, we design with intent. We design for better human experiences.

Natural Elements Too

Construction

	Air Too	Earth Too	Fire Too	Water Too
Style Number	T7167	T7168	T7169	T7170
Fiber Content	Thrive® by Universal Fibers®, Nylon 6,6 with 75% recycled content and Permanent Stain Resistance			
Construction	Patterned Loop			
Carpet Tile Size	12" x 36" (30.48 cm x 91.44 cm)			
Dye Method	Solution Dyed			
Total Thickness	.390" (9.91 mm)			
Primary Backing	Synthetic			
Secondary Backing	Sustaina™ (PVC-free polyester non-woven felt)			
GLP Certification	GLP100162			

Product manufactured utilizing pre-consumer and post-consumer recycled content. Please see environmental specifications for additional information.

Specifications may vary slightly over the life of a product. For current specifications, please visit atlasmasland.com

Performance

Environmental	Meets the standards for the Carpet & Rug Institute's Indoor Air Quality Green Label Plus Carpet Testing Program 3rd party certified PLATINUM to the NSF/ANSI 140 Sustainability Assessment for Carpet
Flammability Rating	Flooring Radiant Panel ASTM E-648 and/or NFPA 253 Greater than 0.45 watts/CM ² Class 1 (EU) BFL S 1 Surface Flammability of Carpets and Rugs (16 CFR Chapter II Subchapter D, Part 1630 CPSC FF 1-70) also referenced as ASTM D-2859
Smoke Density	Passes NBS Smoke Chamber Test ASTM E-662 (flaming mode)
Colorfastness to Light	4.0 or better
Static Rating	Less than 3.5 kV. Antistat warranted for the life of the carpet
Warranty	Lifetime Commercial Limited Warranty



PLATINUM CERTIFIED
NSF/ANSI 140
Sustainable Carpet

Natural Elements Too coordinates with Calibré High Performance LVT. Please visit atlasmasland.com for additional color options.

Slight variations between sample swatches and production goods are to be expected and are considered normal. Likewise, such variations will occur between production goods of different dye lots. Chair pads are recommended to enhance the aesthetic value and longevity of the product.

All AtlasMasland designs are protected under the U.S. Copyright Act of 1976. Any unauthorized duplication or approximation of an AtlasMasland design constitutes copyright infringement in violation of federal law. ©11/2020 AtlasMasland™.

For reclamation of this book, please contact your AtlasMasland contract manager.

Order samples: **1.888.633.4770** or atlasmasland.com

P.O. Box 11467 Mobile, AL 36671 716 Bill Myles Drive Saraland, AL 36571

