



CALIBRÉ

HIGH PERFORMANCE LVT





Calibré High Performance LVT from Masland Contract is engineered to deliver long lasting performance and durability combined with outstanding aesthetics for commercial and hospitality interiors. Calibré LVT is easy to install and maintain.



ABSTRACT A5013



WOOD W1018



QUICK SHIP W1002

With a wide selection of looks ranging from natural woods to acid stained concrete, the Calibré line of high performance luxury vinyl tile provides diverse options for commercial and hospitality interiors.



WOOD W1009



ABSTRACT A5005



ABSTRACT A5013

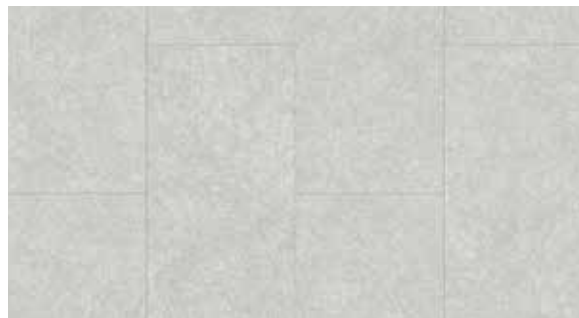
ABSTRACT

The stunning range of 14 abstract products combine texture, pattern, and color in 18" x 36" planks to allow for creative expression. The larger profile plank provides a distinctive, formidable look of scale on the floor.

18" x 36" Plank
14 Colorways

ABSTRACT

18" x 36" Plank



A5002



A5001



ABSTRACT A5001



ABSTRACT A5004



A5004



A5005



A5006

ABSTRACT

18" x 36" Plank



A5007



ABSTRACT A5007



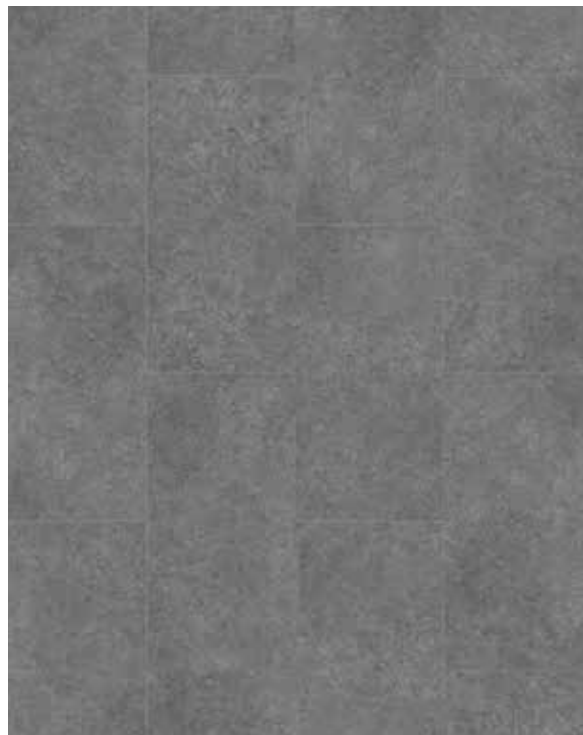
ABSTRACT A5008



A5008

ABSTRACT

18" x 36" Plank



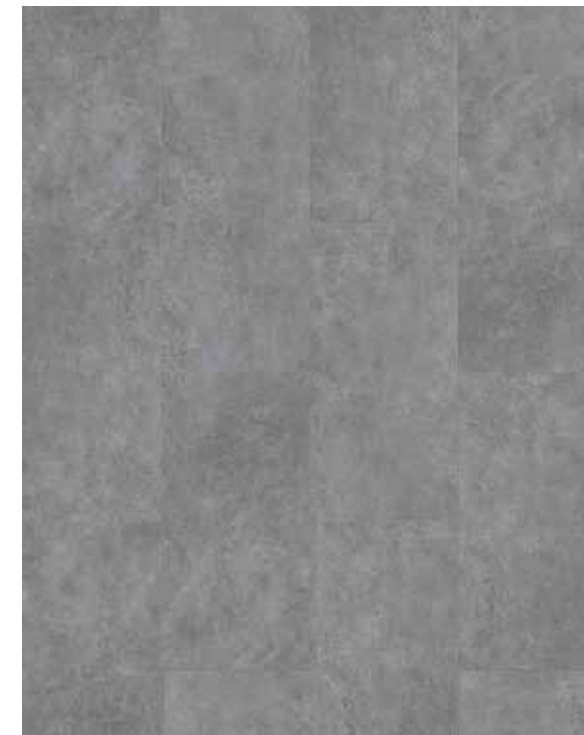
A5009



ABSTRACT A5009



ABSTRACT A5010



A5010

ABSTRACT

18" x 36" Plank



A5011



ABSTRACT A5011



ABSTRACT A5012



A5012

ABSTRACT

18" x 36" Plank



A5013



ABSTRACT A5013

ABSTRACT A5014



A5014



ABSTRACT A5014



ABSTRACT A5015

ABSTRACT

18" x 36" Plank



A5015



WOOD W1018



WOOD W1009

WOOD

Realistic wood finishes create warm beautiful spaces in hospitality, corporate, education, senior living, and retail market segments. Large 9.25" x 59.25" planks show off the depth and detail of the wood grain patterns to create truly striking installations. The loose lay installation of our wood patterns allows for easy replacement and removal.

9 1/4" x 59 1/4" Plank

13 Colorways

WOOD

9 1/4" x 59 1/4" Plank

*Embossed in register



W1007*



WOOD W1007*



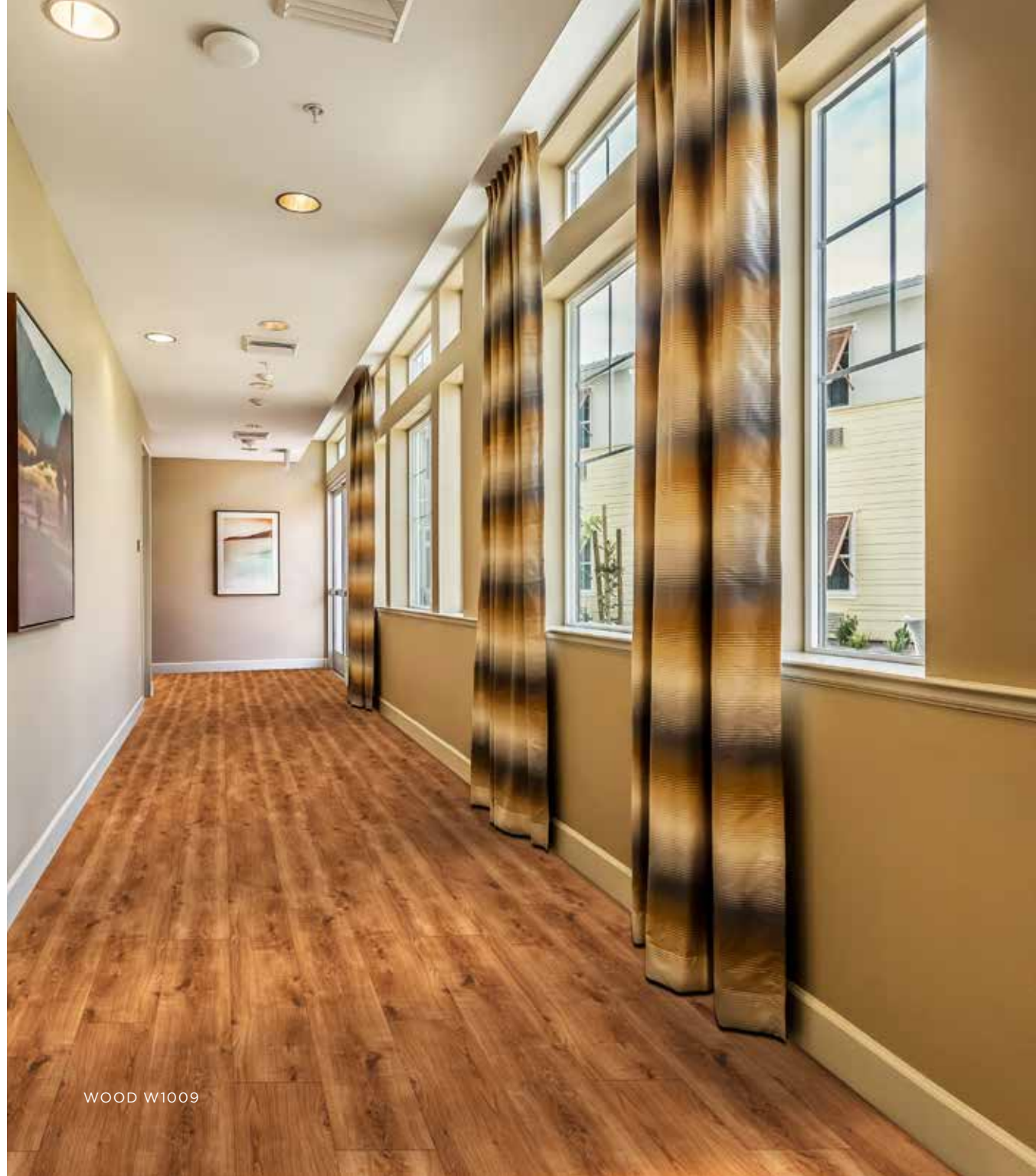
WOOD W1008



W1008



W1009



WOOD W1009



WOOD W1010

WOOD

9 1/4" x 59 1/4" Plank

*Embossed in register



W1010

WOOD

9 1/4" x 59 1/4" Plank

*Embossed in register



W1011



WOOD W1011



WOOD W1012



W1012



W1013



WOOD W1013



WOOD W1014



W1014



W1015

WOOD

9 1/4" x 59 1/4" Plank

*Embossed in register

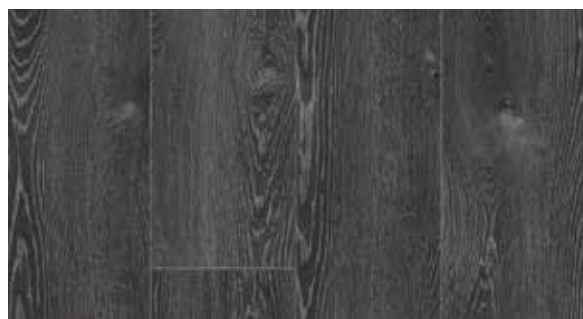
WOOD

9 1/4" x 59 1/4" Plank

*Embossed in register



W1016*



W1018*



WOOD W1016*

WOOD W1019*



W1019*



WOOD W1010



WOOD W1020*

WOOD

9 1/4" x 59 1/4" Plank
*Embossed in register



W1020*



QUICK SHIP W1002

QUICK SHIP

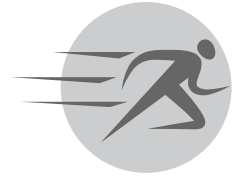


Calibré offers six in-demand wood finishes available for quick ship. The selection is intended to be compatible to a multitude of color palettes for ease of specification. These products are offered in 3mm glue down 6" x 48" planks.

6" x 48" Plank

6 Colorways

QUICK SHIP



6" x 48" Plank



W1001



QUICK SHIP W1001



QUICK SHIP W1002



W1002



W1003



QUICK SHIP W1003



QUICK SHIP W1004



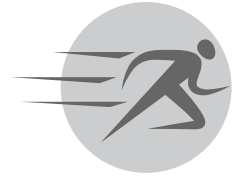
QUICK SHIP

6" x 48" Plank

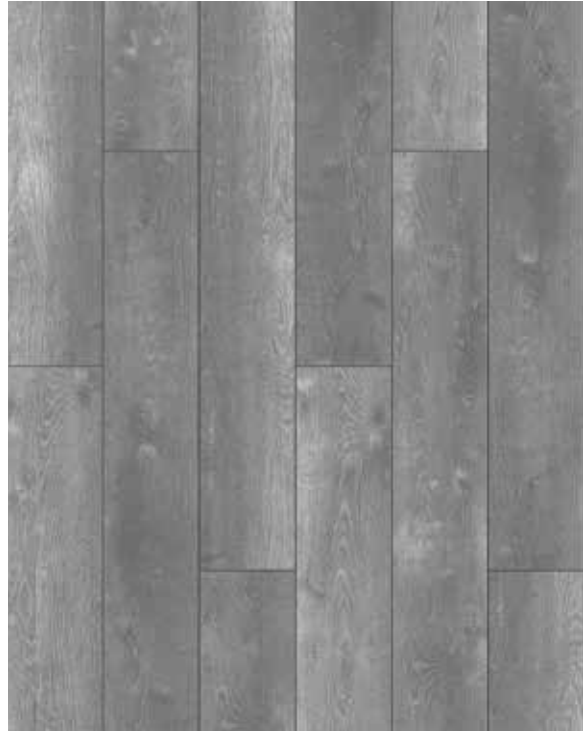



W1004

QUICK SHIP



6" x 48" Plank



W1005 



QUICK SHIP W1005



QUICK SHIP W1006



W1006 

ABSTRACT

18" x 36" Plank
14 Colorways



A5004



A5007



A5010



A5013



A5001



A5005



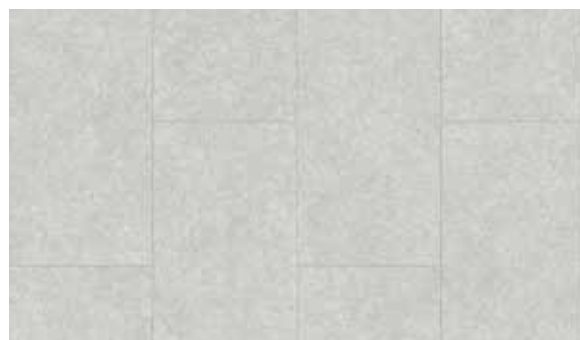
A5008



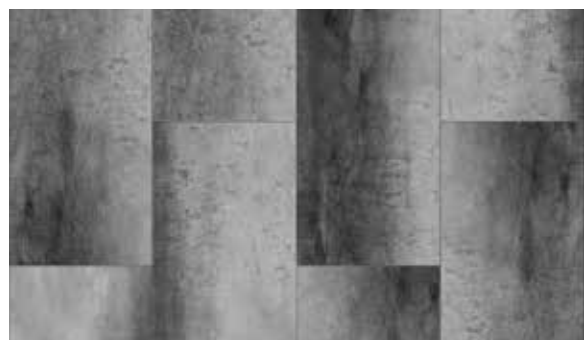
A5011



A5014



A5002



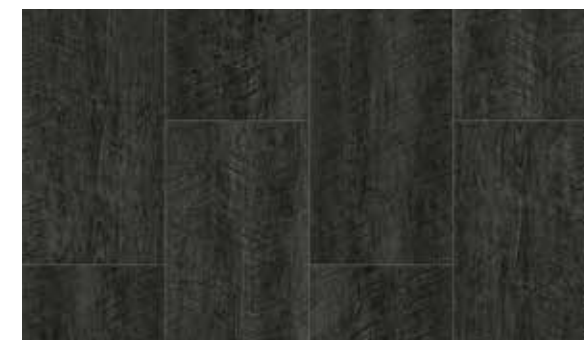
A5006



A5009



A5012



A5015



W1007*



W1010



W1013



W1016*



W1008



W1011



W1014



W1018*



W1009



W1012



W1015



W1019*



W1020*

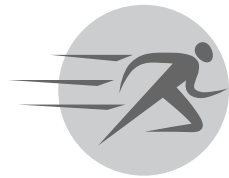
WOOD

9 1/4" x 59 1/4" Plank

13 Colorways

*Embossed in register

QUICK SHIP



6" x 48" Plank
6 Colorways



W1001



W1003



W1005



W1002



W1004



W1006

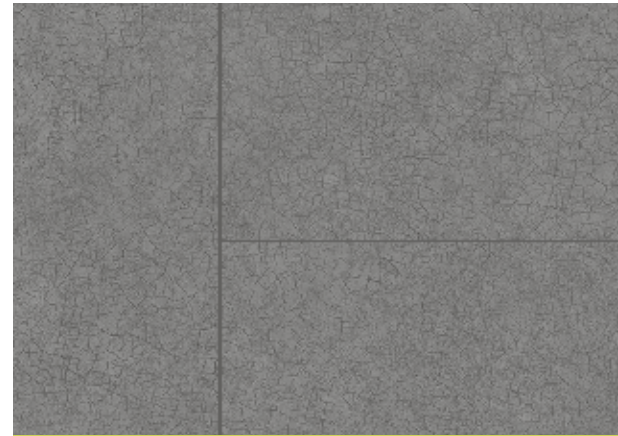


QUICK SHIP W1001

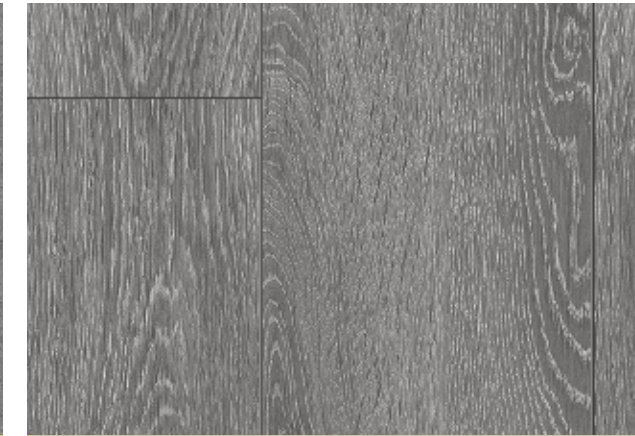
SPECIFICATIONS

TESTS	STANDARD	MINIMUM REQUIREMENT	DRY BACK (3mm)	LOOSE LAY (5mm)	WARRANTY
Dimensional Stability	ASTM F2199	0.020 in./lin. ft. max	Passes	Passes	COMMERCIAL 10 Year - Limited Commercial Wear Warranty
Residual Indentation	ASTM F1914	Avg. < 8%	Passes	Passes	
Static Load Limit	ASTM F970	250 PSI min	Passes	Passes	
Resistance to Light	ASTM F1515	$\Delta E < 8$ avg. max	Passes	Passes	
Chemical Resistance	ASTM F925	No more than slight change	Passes	Passes	LIGHT COMMERCIAL 15 Year - Limited Commercial Wear Warranty See warranty documentation for full details of terms and conditions
Resistance to Heat	ASTM F1514	$\Delta E < 8$ avg. max	Passes	Passes	
Critical Radiant Flux	ASTM E648	≥ 0.45 Watts/cm ² (class 1)	Passes	Passes	
Smoke Density	ASTM E662	≤ 450	Passes	Passes	
Flexibility	ASTM F137	≤ 1.0 in. (No cracks or breaks)	Passes	Passes	
Indoor Air Quality		Low VOC	FloorScore Certified	FloorScore Certified	

Actual product color may vary from printed photos. Please order samples for exact color representation.



STYLE:	Abstract
CONSTRUCTION:	High Performance Luxury Vinyl Tile
SIZE:	18" x 36" (45.72cm x 91.44cm)
WEAR LAYER:	20 mil (0.5 mm)
FINISH:	Ironclad Anti-Scratch Ceramic PU Finish
OVERALL THICKNESS:	0.197" (5 mm)
INSTALLATION TYPE:	Loose Lay
PIECES PER BOX:	6
SQUARE FEET PER BOX:	26.9 (2.50 m ²)
WEIGHT PER BOX:	41.89 lbs (19.00 kg)
INDOOR AIR QUALITY:	FloorScore Certified



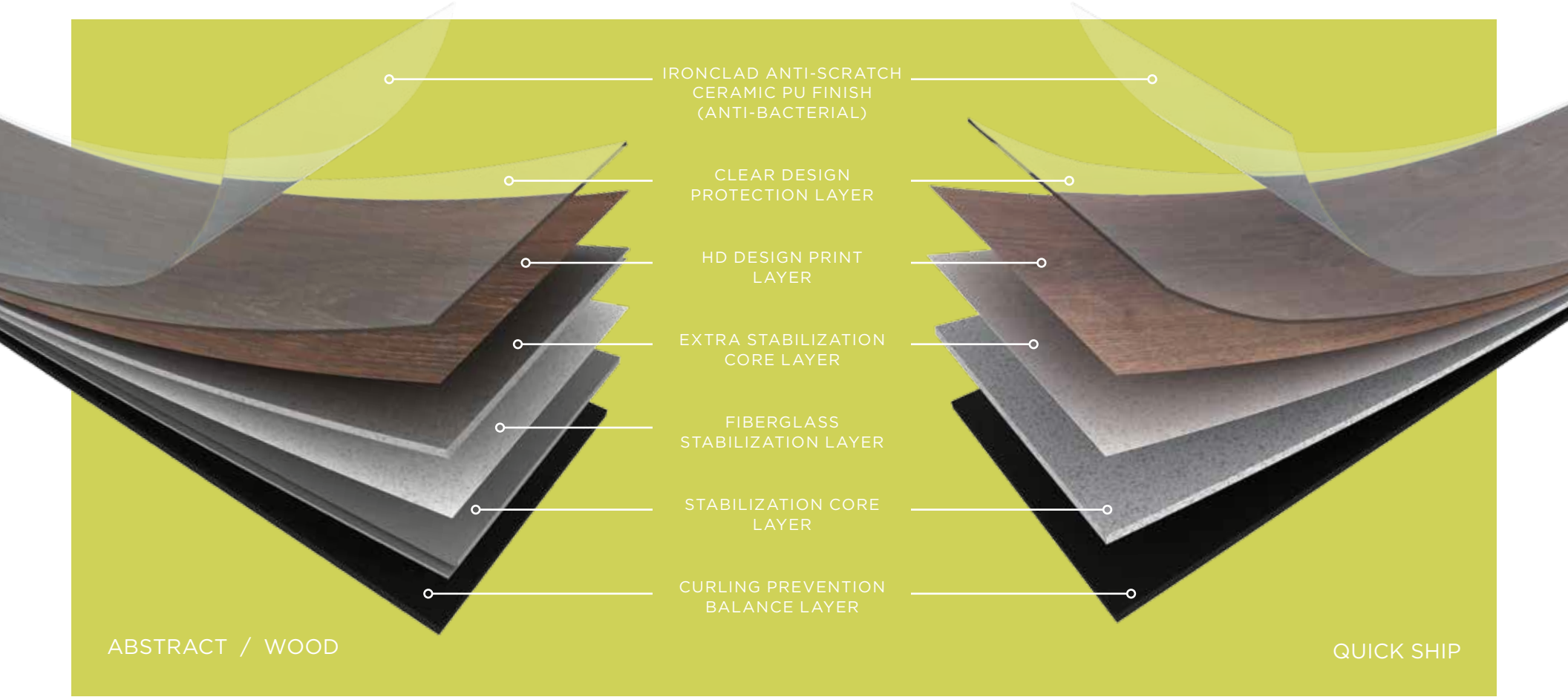
STYLE:	Wood
CONSTRUCTION:	High Performance Luxury Vinyl Tile
SIZE:	9.25" x 59.25" (23.495cm x 150.495cm)
WEAR LAYER:	20 mil (0.5 mm)
FINISH:	Ironclad Anti-Scratch Ceramic PU Finish
OVERALL THICKNESS:	0.197" (5 mm)
INSTALLATION TYPE:	Loose Lay
PIECES PER BOX:	6
SQUARE FEET PER BOX:	22.8 (2.12 m ²)
WEIGHT PER BOX:	35.54 lbs (16.12 kg)
INDOOR AIR QUALITY:	FloorScore Certified



STYLE:	Quick Ship
CONSTRUCTION:	High Performance Luxury Vinyl Tile
SIZE:	6" x 48" (15.24cm x 121.92cm)
WEAR LAYER:	20 mil (0.5 mm)
FINISH:	Ironclad Anti-Scratch Ceramic PU Finish
OVERALL THICKNESS:	0.118" (3 mm)
INSTALLATION TYPE:	Glue Down
PIECES PER BOX:	18
SQUARE FEET PER BOX:	36.0 (3.34 m ²)
WEIGHT PER BOX:	37.17 lbs (16.86 kg)
INDOOR AIR QUALITY:	FloorScore Certified



CONSTRUCTION





ORDER YOUR SAMPLES AT 1-888-633-4770 OR ATLASMASLAND.COM

P.O. BOX 11467 | MOBILE, AL 36671 | 716 BILL MYLES DRIVE, SARALAND, AL 36571