



LIVING

Blossoming

atlasmasland.com





LIVING

Blossoming

Living began with an innovative concept to creatively combine key elements of Senior Living, Hospitality and Multi-family into one complete offering. From this vision, the dual portfolios of Blossoming and Achievements were devised. Both encompass an extensive selection of broadloom and carpet tile patterns, ideal for an array of interior applications.

The on-trend color palette offers a diverse mixture of sophisticated neutrals and vibrant brights that can either soothe or energize an environment while adding the exceptional performance benefits of Universal Fibers® Nylon 6,6 with Permanent Stain Resistance.

Cover Image:

ENERGETIC & KEEN 

Shown In **BEACH DAY**

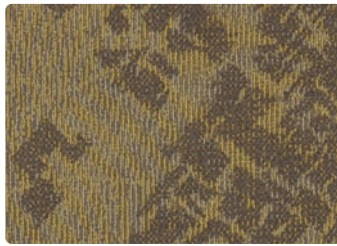
Running Line Patterns

Shown In **NEUTRALITY**



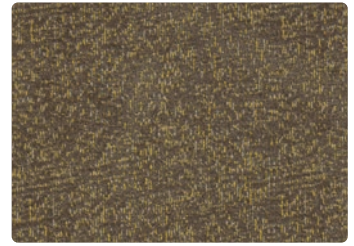
ADVENTUROUS

Available In



ENERGETIC

Available In



KEEN

Available In



Supporting Patterns*

Shown In **RUSTIC POTTERY**



AVID

Available In



DARING

Available In



GRANDIOSE

Available In



INDUSTRIOUS

Available In



VICTORIOUS

Available In



Product Icons



BROADLOOM



12 x 36

Installation Icons



12 x 36



ASHLAR



BRICK



HERRINGBONE

***Supporting Patterns**

Minimums apply. Please contact your Contract Manager for requirements.

Running Line Patterns

ADVENTUROUS

Available In



ENERGETIC

Available In



KEEN

Available In



Creating Beautiful Spaces

Select from a variety of small to large scale tip-sheared loop styles that color coordinate effortlessly. The patterns are meticulously designed to blend and be combined throughout a space for visual interest.



ASHLAR



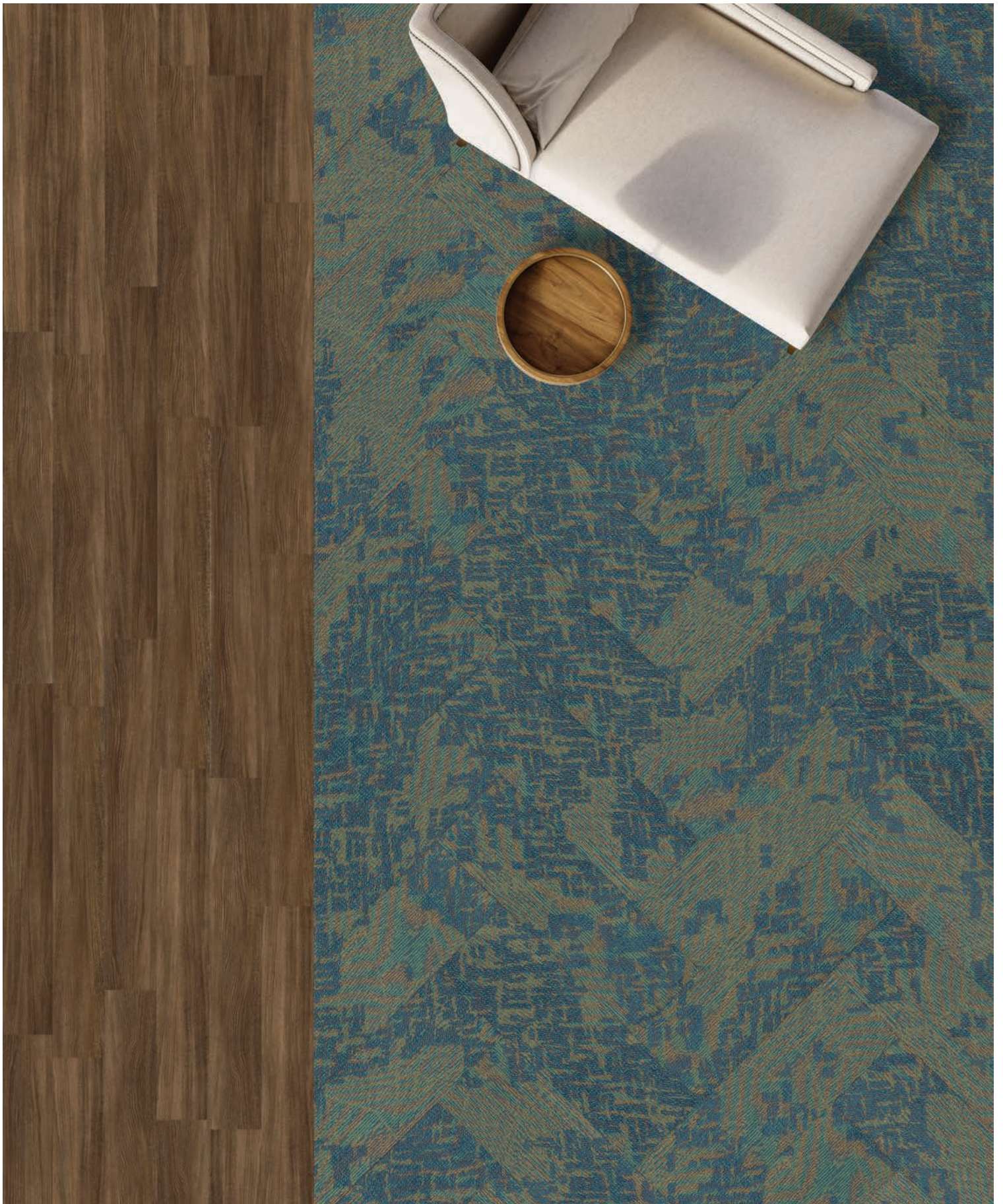
BRICK



HERRINGBONE







ENERGETIC



Shown In **BEACH DAY**

Shown With **Calibré LVT 01208 Espresso**



ENERGETIC & KEEN





Shown In **BEACH DAY**



Shown In **NEUTRALITY**
Shown With **Calibré LVT 01202 Smoke**

Supporting Patterns

Supporting Patterns

Minimums apply. Please contact your Contract Manager for requirements.

AVID

Available In



DARING

Available In



GRANDIOSE

Available In



INDUSTRIOUS

Available In



VICTORIOUS

Available In



ASHLAR



BRICK



HERRINGBONE



INDUSTRIOUS

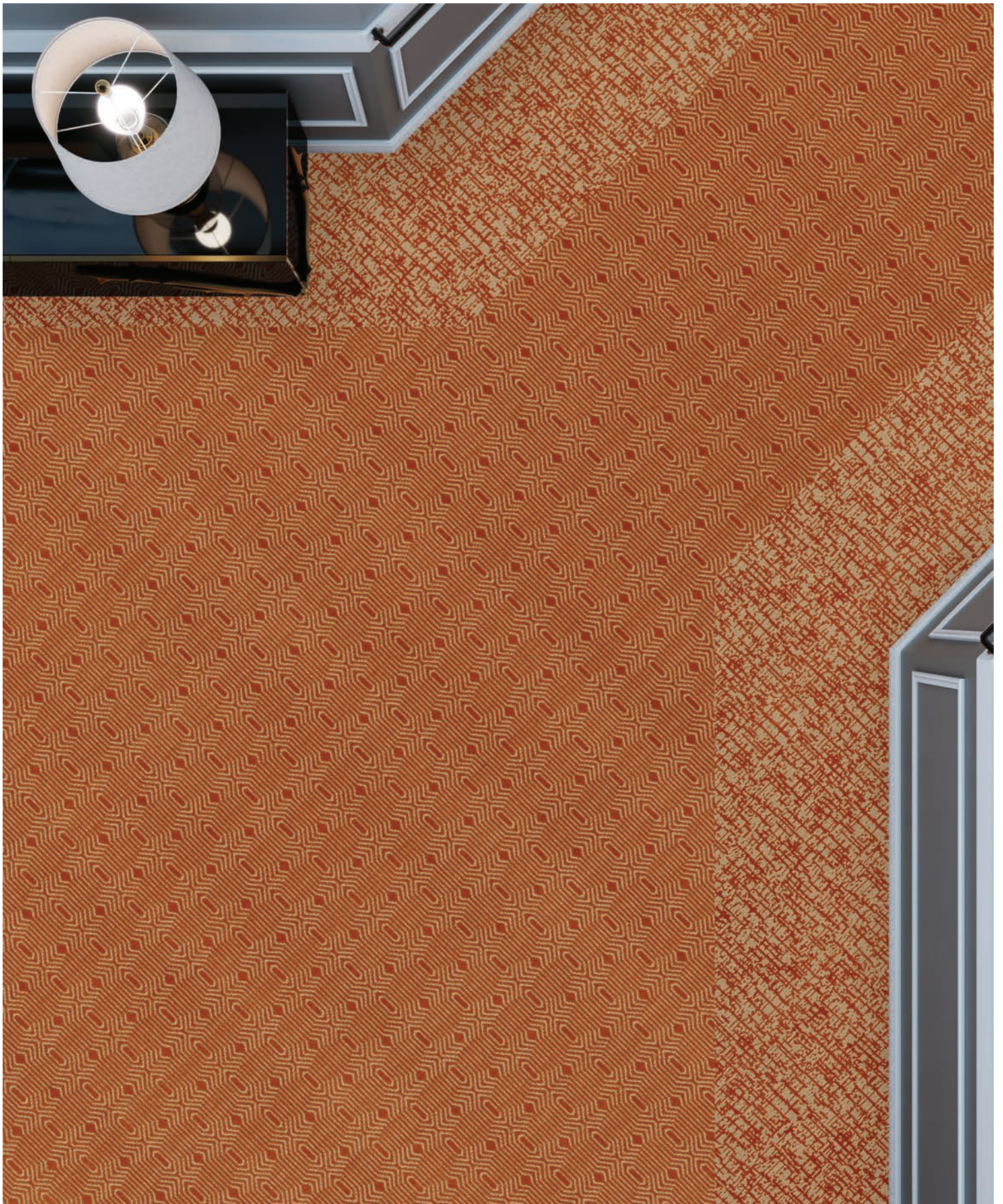


Shown In DENIM WASH



DARING & VICTORIOUS 

Shown In DENIM WASH







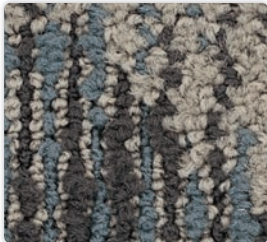
Color Line

Shown In **ENERGETIC**

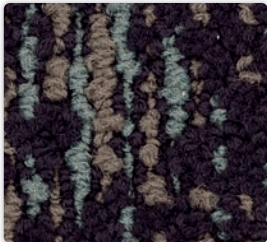
Sophisticated neutrals and vibrant brights that can soothe or energize an environment.



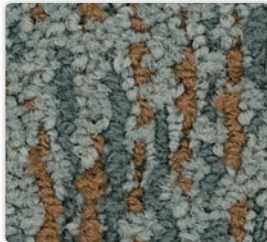
01 **CALMING**



02 **MEDITATION**



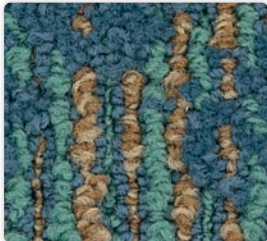
03 **PURPLE RAIN**



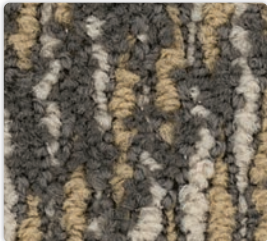
04 **ZEN GARDEN**



05 **PROMENADE**



06 **BEACH DAY**



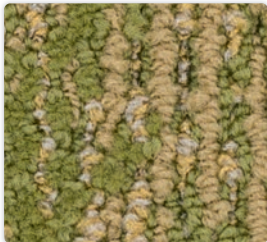
07 **SILVER LINING**



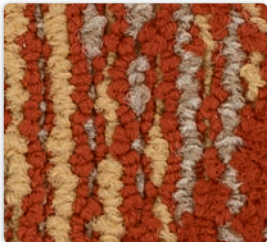
08 **MIXED METALS**



09 **NEUTRALITY**



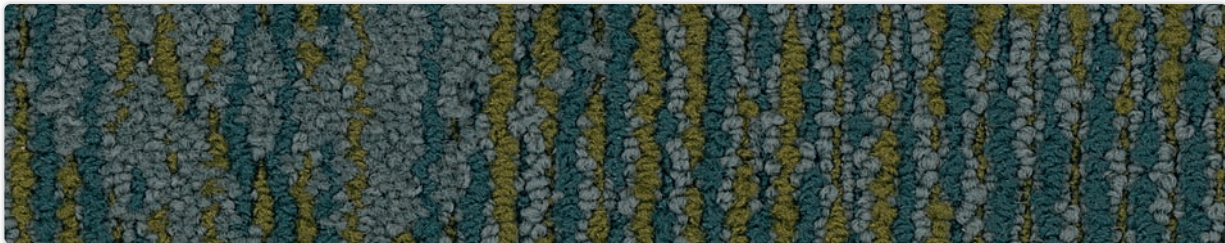
10 **ECO-FRIENDLY**



11 **RUSTIC POTTERY**



12 **VERY BERRY**



13 **DENIM WASH**

For the most accurate color representation, please request a sample by contacting your Contract Manager, Customer Service at 1-888-633-4770 or by visiting atlasmasland.com.

Living - Blossoming

Construction

	Adventurous	Energetic	Keen
Fiber Content	100% Universal Fibers®. Nylon 6,6 with Permanent Stain Resistance		
Construction	Tip Sheared Loop Pattern		
Dye Method	Solution Dyed		
Gauge	1/12		
Pile Height	.375"/.250"/.125" (9,53mm/6,35mm/3,18mm)		
	Product manufactured utilizing pre-consumer and post-consumer recycled content. Please see environmental specifications for additional information. Specifications may vary slightly over the life of a product. For current specifications, please visit atlasmasland.com .		

Broadloom

Style Number	7292	7293	7294
Pattern Repeat	36"W x 72"L (91.44cm x 182.88cm)	36"W x 72"L (91.44cm x 182.88cm)	18"W x 12"L (45.72cm x 30.48cm)
Primary Backing	Woven Polypropylene		
Secondary Backing	Permian Bac™		
GLP Certification	GLP1678		
Warranty	Limited 10-year Wear Warranty		

Carpet Tile

Style Number	7292 not available in tile	T7293	T7294
Tile Size	7292 not available in tile	12" x 36" (30.48cm x 91.44cm)	12" x 36" (30.48cm x 91.44cm)
Primary Backing	Synthetic		
Secondary Backing	Sustaina™ (PVC-free polyester non-woven felt cushion)		
Total Thickness	.515" (13.08mm)		
GLP Certification	GLP100162		
Warranty	Limited Lifetime Commercial Warranty		

Area Rugs

Area rugs are available in a variety of shapes, sizes, backings and edge finishes. Please contact your contract manager for more information on the AtlasMasland Area Rug Program or visit atlasmasland.com. Specifications may vary slightly over the life of a product. For current specifications, please visit atlasmasland.com.

Performance

Environmental	Meets the standards for the Carpet & Rug Institute's Indoor Air Quality Green Label Plus Carpet Testing Program 3rd party certified to the NSF/ANSI 140 Sustainability Assessment for Carpet
Flammability Rating	Flooring Radiant Panel ASTM E-648 and/or NFPA 253 Greater than 0.45 watts/CM ² Class 1 (EU) CFL S 1 (broadloom), BFL S 1 (tile) Surface Flammability of Carpets and Rugs (16 CFR Chapter II Subchapter D, Part 1630 CPSC FF 1-70) also referenced as ASTM D-2859
Smoke Density	Passes NBS Smoke Chamber Test ASTM E-662
Colorfastness to Light	4.0 or better
Static Rating	Less than 3.5 kV. Antistat warranted for the life of the carpet

Blossoming coordinates with Calibré High Performance LVT. Please refer to the Calibré Quiet Down SPC folder for additional color options.

Slight variations between sample swatches and production goods are to be expected and are considered normal. Likewise, such variations will occur between production goods of different dye lots. Chair pads are recommended to enhance the aesthetic value and longevity of the product.

All AtlasMasland designs are protected under the U.S. Copyright Act of 1976. Any unauthorized duplication or approximation of an AtlasMasland design constitutes copyright infringement in violation of federal law. ©4/2020 AtlasMasland™.

Order samples: **1.888.633.4770** or atlasmasland.com

P.O. Box 11467 Mobile, AL 36671 716 Bill Myles Drive Saraland, AL 36571

