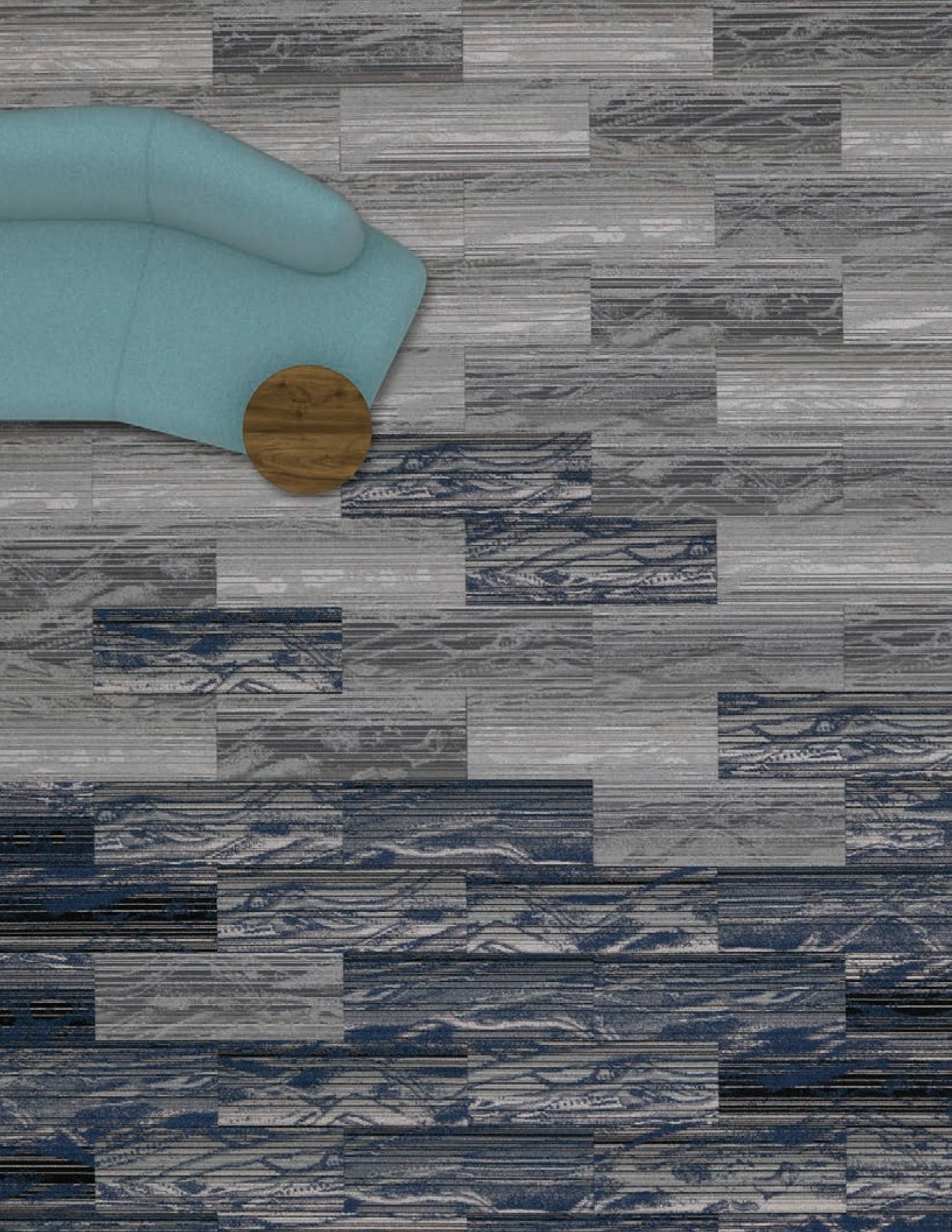




Revealed
atlasmasland.com



UNCOVER SHOWN IN TRENCH & FURROW / BRICK
SHOWN WITH CALIBRÉ LVT W1012 / ASHLAR

Revealed

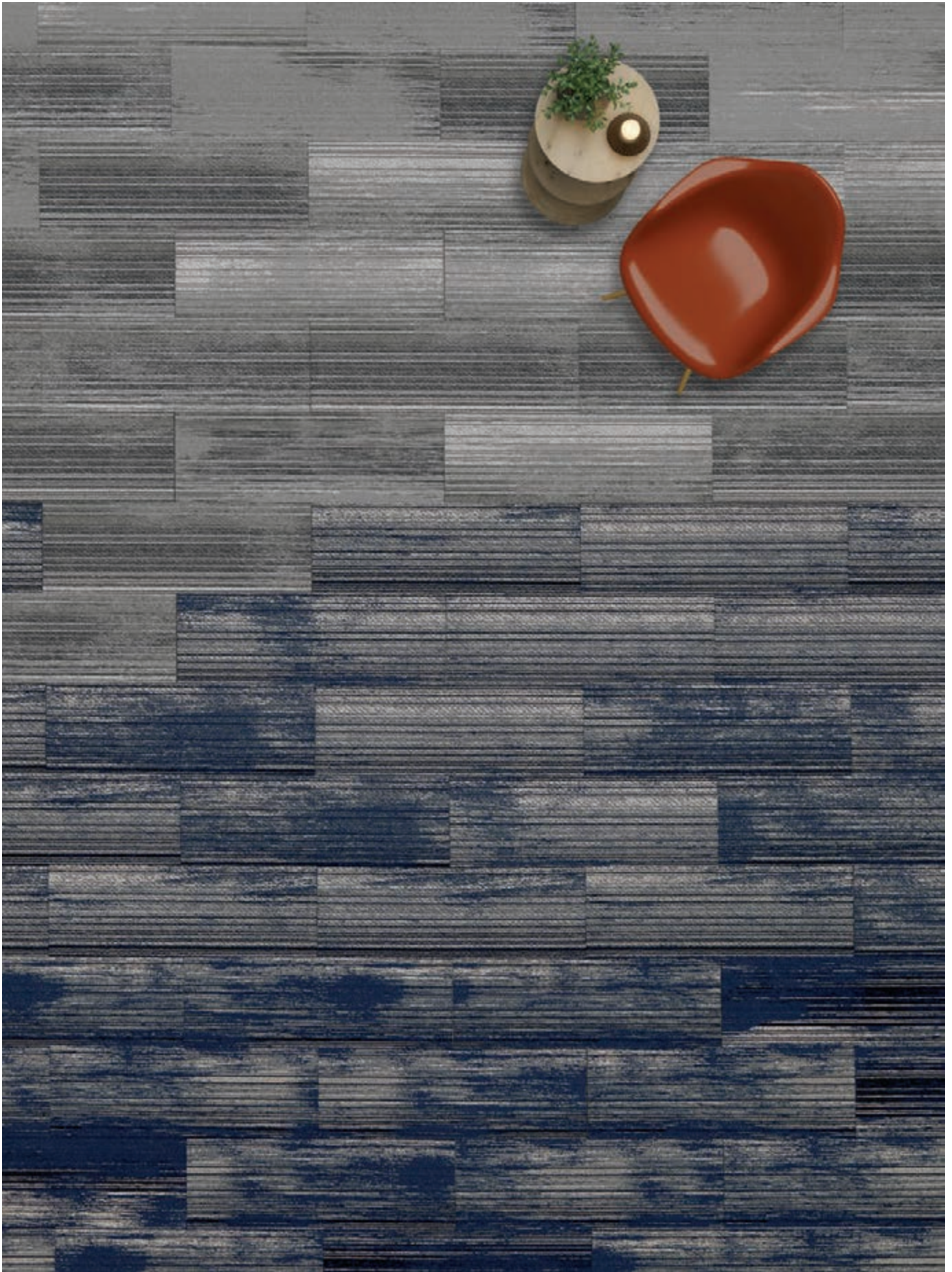
Revealed explores the art of excavation where timeworn artifacts and rare fossils are discovered. Hidden deep within the earth's terrain, rich colors with layered details blend artistically to create magical treasures. Linear and arched bands of texture shift intermittently in hue and intensity to form a dynamic illusion of movement. Revealed includes three visually inspiring carpet tile styles constructed with Thrive®, the most sustainable nylon 6,6 fiber in the world and Sustaina™, our non-PVC, non-polyurethane backing system.

Revealed's powerful sustainability story paired with its striking visuals and performance capabilities makes it the perfect solution for the most coveted commercial spaces. It's the carpet tile that you have been searching for!

ON THE COVER

UNMASK IN TRENCH & UNCOVER IN FURROW / ASHLAR

UNMASK & UNVEIL SHOWN IN TRENCH & FURROW / BRICK



U N M A S K SHOWN IN FURROW / ASHLAR



UNCOVER SHOWN IN TRENCH / ASHLAR





UNCOVER SHOWN IN **TRENCH** & UNVEIL SHOWN IN **FURROW** / STAGGER



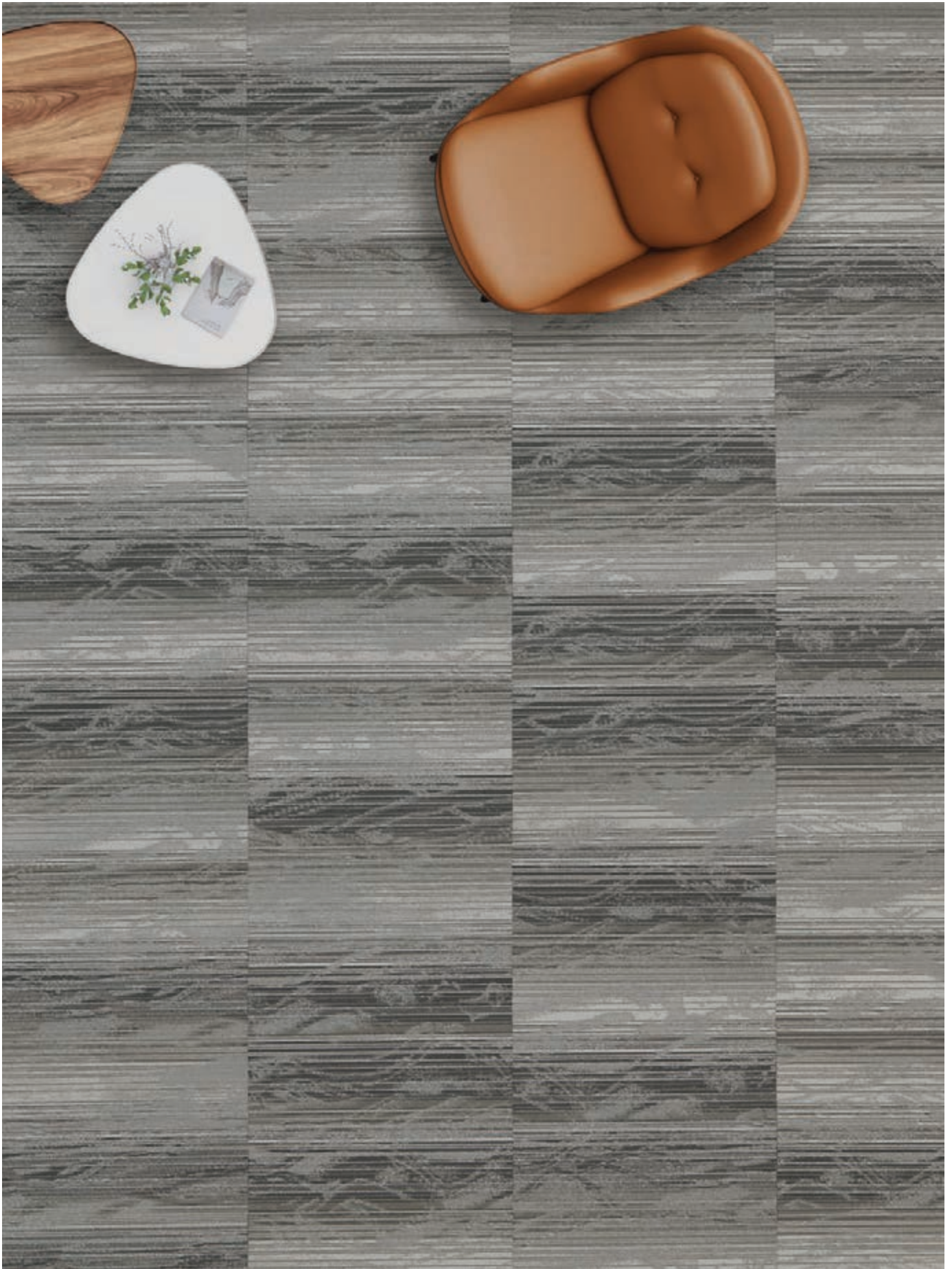
UNVEIL SHOWN IN TRENCH & FURROW WITH CALIBRÉ LVT A5008 / ASHLAR



UNVEIL SHOWN IN TRENCH / HERRINGBONE



UNCOVER SHOWN IN TRENCH / MONOLITHIC



Revealed's incredible sustainability story.



Thrive[®]
UNIVERSAL
FIBERS

The Most Sustainable Nylon 6,6 Carpet Fiber in the World



Carbon Offset Benefit*

**630,000 lbs
Per Year**

Offsets 358 Commuters
Per Year*

*Chicago commutes - 250 trips per year



Carbon Offset Benefit*

**13,125 Trees
Per Year**

Nearly all trees in
Central Park, NY
Year after Year after Year

Thrive[®] stands alone as the most environmentally conscious solution-dyed high performance nylon 6,6 carpet fiber in the world with the highest level of recycled material, the lowest CO₂ emission and built-in encapsulated stain resistance. With an industry leading product to CO₂ ratio of 1:3 reducing carbon emissions by 70%, Thrive[®] consists of 75% recycled content using pre- and post-consumer material sourced through a proprietary process which includes the use of recycled carpet diverted from landfills.

Thrive[®] aligns with a variety of environmental initiatives including LEED[®] v3, LEED[®] v4, Living Building Challenge[®], WELL Building Standard[®], Green Globes[®], BREEAM[®] and the 2030 Challenge for Products. All with the added assurance of independent GreenCircle[®] certification.

*Assumes annual carpet production of 100,000 square yards. Fiber weight, 16oz / sq yd.

SUSTAINA™

Forget PVC and polyurethane.

The Sustaina Backing System provides a uniquely breathable cushioned backing, free of all red-listed components. It's the perfect complement to Uncover, Unmask and Unveil.



RECYCLE

Combined with Thrive® fiber, Revealed is constructed with

77%
recycled content:

18%
Post-Consumer

59%
Pre-Consumer



SUSTAIN

Planet-friendly Sustaina contains no PVC, polyurethane or any red-listed components.



BREATHE

Sustaina's unique construction makes it breathable, allowing moisture vapor to transfer through the product.

Warranted up to 99% RH and pH of 12 utilizing Sustaina 99 adhesive.



PERFORM

All the underfoot comfort, appearance retention and sound insulating characteristics you'd expect from high performance backing.

UNCOVER & UNMASK SHOWN IN FURROW WITH CALIBRÉ LVT A5014 / STAGGER



An Unexpected Combination Of Color And Dimension

A well-balanced blend of complex hues lay the foundation to a contemporary space while adding the performance benefits of solution dyed nylon 6,6 yarn.

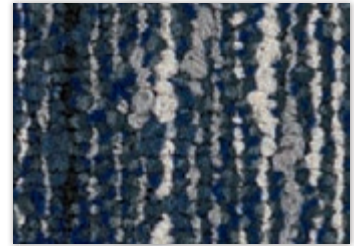
SHOWN IN UNVEIL



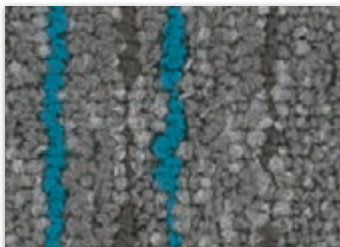
01 TRENCH



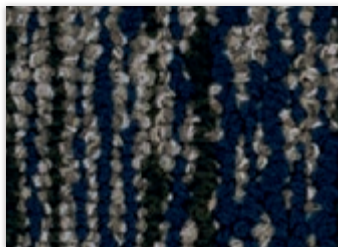
02 QUARRY



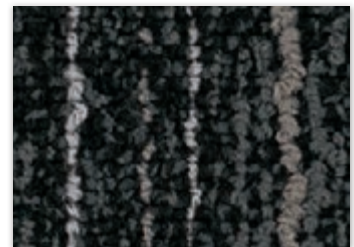
03 FURROW



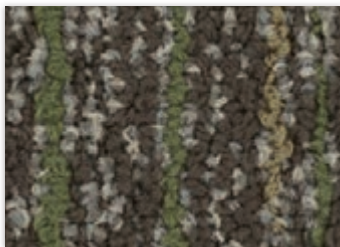
04 DELVE



05 GOUGE



06 SCOOP



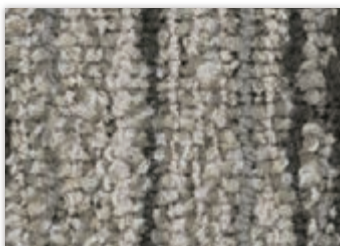
07 EXPOSE



08 LAY BARE



09 EXCAVATE



10 UNWRAP



11 NOTCH



12 GROOVE

For the most accurate color representation, please request a sample by contacting Customer Service at 1-888-633-4770 or by visiting atlasmasland.com.

Revealed

Construction

	Unveil	Uncover	Unmask
Style Number	T7990	T7991	T7992
Fiber Content	Thrive® by Universal Fibers®, Nylon 6,6 with 75% recycled content and Permanent Stain Resistance		
Construction	Patterned Loop		
Carpet Tile Size	12"W x 36"L (30.48cm x 91.44cm)		
Dye Method	Solution Dyed		
Total Thickness	.390" (9.91mm)		
Primary Backing	Synthetic		
Secondary Backing	Sustaina™ (PVC-free polyester non-woven felt cushion)		
GLP Certification	GLP100162		

Product manufactured utilizing pre-consumer and post-consumer recycled content. Please see environmental specifications for additional information.

Specifications may vary slightly over the life of a product. For current specifications, please visit atlasmasland.com.

Performance

Environmental	Meets the standards for the Carpet & Rug Institute's Indoor Air Quality Green Label Plus Carpet Testing Program 3rd party certified to the NSF/ANSI 140 Sustainability Assessment for Carpet
Flammability Rating	Flooring Radiant Panel ASTM E-648 and/or NFPA 253 Greater than 0.45 watts/CM ² Class 1 (EU) BFL S 1 Surface Flammability of Carpets and Rugs (16 CFR Chapter II Subchapter D, Part 1630 CPSC FF 1-70) also referenced as ASTM D-2859
Smoke Density	Passes NBS Smoke Chamber Test ASTM E-662 (flaming mode)
Colorfastness to Light	4.0 or better
Static Rating	Less than 3.5 kV. Antistat warranted for the life of the carpet
Warranty	Lifetime Commercial Limited Warranty

Slight variations between sample swatches and production goods are to be expected and are considered normal. Likewise, such variations will occur between production goods of different dye lots. AtlasMasland matches are obtained under cool white fluorescent lighting. Chair pads are recommended to enhance the aesthetic value and longevity of the product.

All AtlasMasland designs are protected under the U.S. Copyright Act of 1976. Any unauthorized duplication or approximation of an AtlasMasland design constitutes copyright infringement in violation of federal law. ©2/2020 AtlasMasland™.

Order samples: **1.888.633.4770** or atlasmasland.com

P.O. Box 11467 Mobile, AL 36671 716 Bill Myles Drive Saraland, AL 36571



Thrive®

