



ASHLAR



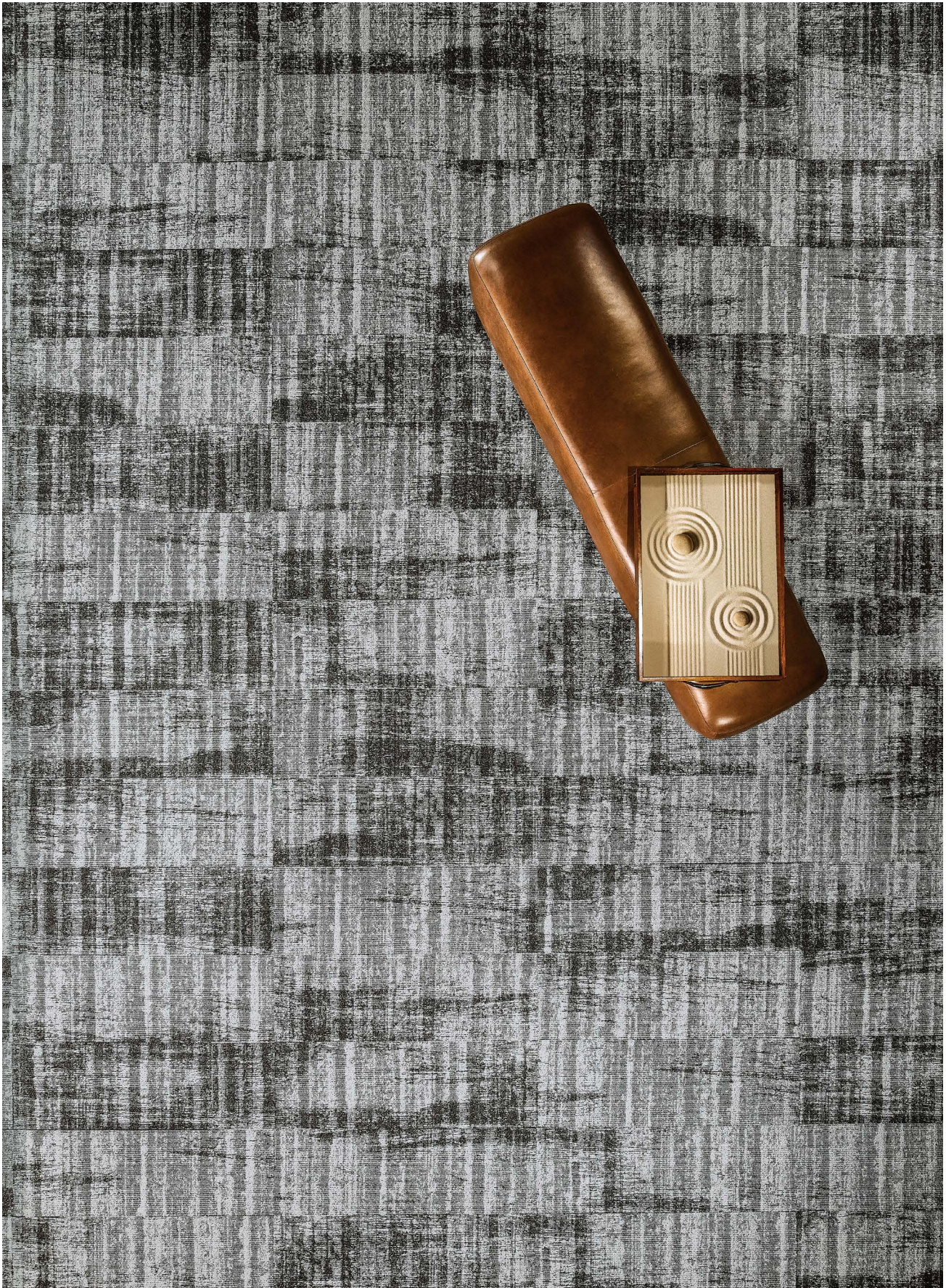
# Natural Elements

[atlasmasland.com](http://atlasmasland.com)

EARTH Shown in 05 Lightning / ASHLAR



EARTH Shown in 05 Lightning / ASHLAR



FIRE Shown in 05 Lightning / MONOLITHIC



FIRE Shown in 05 Lightning / MONOLITHIC



WATER Shown in 05 Lightning / ASHLAR



WATER Shown in 05 Lightning / ASHLAR



AIR Shown in 04 Water / ASHLAR

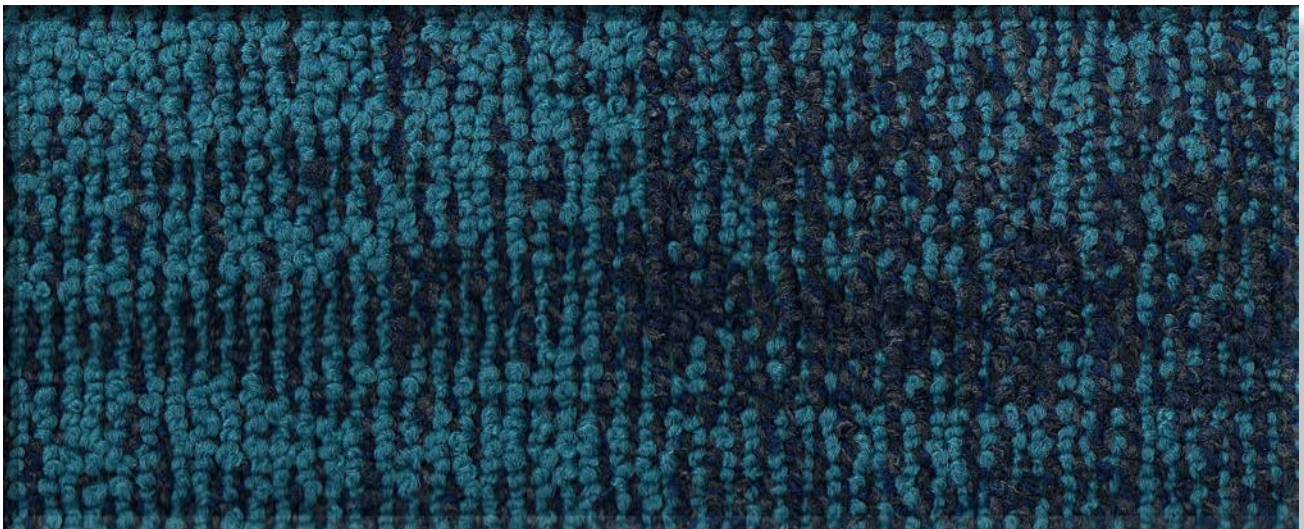








01 SMOKEY



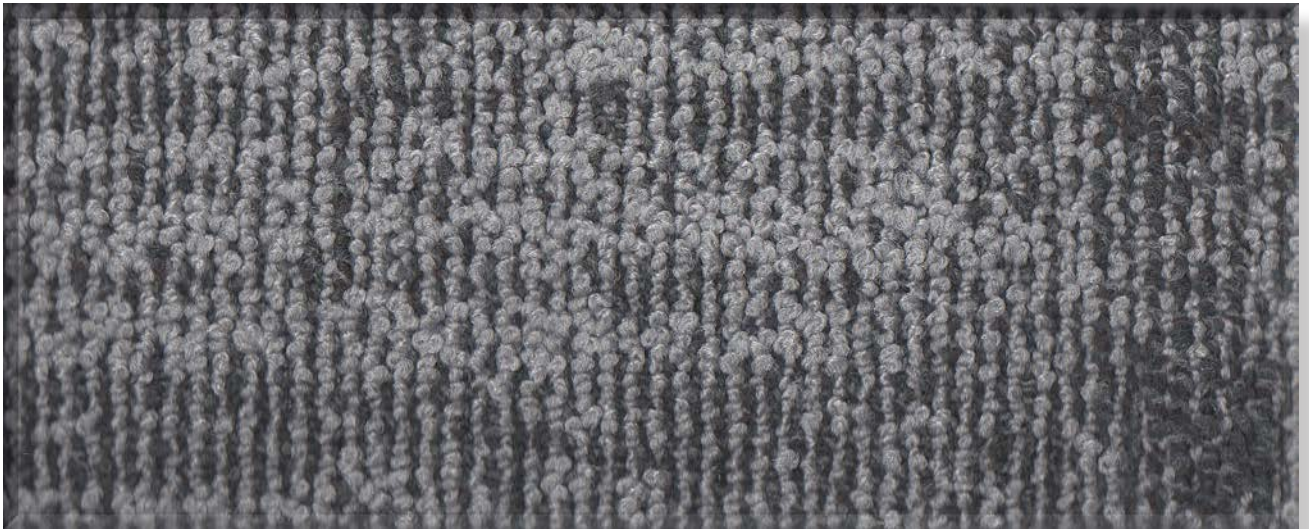
02 BLUE LAVA



03 SUBMERGED



04 WINTER



05 LIGHTNING



06 THUNDER



07 CLOUDED



08 HAZY



09 AUTUMN

## Natural Elements

### Construction

	Air	Earth	Fire	Water
Fiber Content	100%Universal Fibers® Type 6,6 Nylon			
Construction	Patterned Loop			
Dye Method	Solution Dyed			
Gauge	1/12			
Pile Height	.250"/.125" (6.35mm/3.18mm) Product manufactured utilizing pre-consumer recycled content. Please see environmental specifications for additional information. Specifications may vary slightly over the life of a product. For current specifications, please visit <a href="http://atlasmasland.com">atlasmasland.com</a>			

### Carpet Tile

Style Number	T7984	T7985	T7986	T7987
Pattern Repeat	12" x 36" (30.48cm x 91.44cm)			
Primary Backing	Synthetic			
Secondary Backing	Earthwise			
Total Thickness	.315" (8.00mm)			
GLP Certification	GLP1922			
Warranty	Limited Lifetime Commercial Warranty			

### Area Rugs

Area rugs are available in a variety of shapes, sizes, backings, and edge finishes. Please contact your sales associate for more information on the AtlasMasland Area Rug Program or visit [atlasmasland.com](http://atlasmasland.com). Specifications may vary slightly over the life of a product. For current specifications, please visit [atlasmasland.com](http://atlasmasland.com).

### Performance

Environmental	Meets the standard for the Carpet & Rug Institute's Indoor Air Quality Green Label Plus Carpet Testing Program 3rd party certification to the NSF/ANSI 140 Sustainability Assessment for Carpet
Flammability Rating	Flooring Radiant Panel ASTM E-648 and/or NFPA 253 Greater than 0.45 watts/CM <sup>2</sup> Class 1 (EU) CFL S 1 (broadloom), BFL S 1 (tile) Surface Flammability of Carpets and Rugs (16 CFR Chapter II Subchapter D, Part 1630 CPSC FF 1-70) also referenced as ASTM D-2859
Smoke Density	Passes NBS Smoke Chamber Test ASTM E-662
Colorfastness to Light	4.0 or better
Static Rating	Less than 3.5 KV. Antistat warranted for the life of the carpet

### Natural Elements available in Thrive® with up-charge

Slight variations between sample swatches and production goods are to be expected and are considered normal. Likewise, such variations will occur between production goods of different dye lots. Chair pads are recommended to enhance the aesthetic value and longevity of the product.

All AtlasMasland designs are protected under the U.S. Copyright Act of 1976. Any unauthorized duplication or approximation of an AtlasMasland design constitutes copyright infringement in violation of federal law.  
©4/2020 AtlasMasland™.

Order samples: **1.888.633.4770** or [atlasmasland.com](http://atlasmasland.com)  
P.O. Box 114 Mobile, AL 36671 716 Bill Myles Drive, Saraland, AL 36571

