



# Adapt

## COLLECTION

Nature is filled with astonishing combinations of textures, shapes and colors that continually change and evolve over time. The Adapt Collection is inspired by nature's transformation and ability to adapt to its ever-changing surroundings.

The collection features four carpet tile patterns: **Moss**, **Stream**, **Brush** and **Pebble**. Each of the patterns are available in thirteen Antron® Lumena™ solution dyed type 6,6 nylon colorways.



# Adapt

## COLLECTION

### Brush

**Color** 13 Splash

Brush accumulates effortlessly in nature with a blend of twigs and branches that stack together in layers. This lateral design creates both solid and wispy areas of textural interest.

**BRUSH**

MOSS

PEBBLE

STREAM



# Adapt

## COLLECTION

### Brush

Color 13 Splash

Brush accumulates effortlessly in nature with a blend of twigs and branches that stack together in layers. This lateral design creates both solid and wispy areas of textural interest.

**BRUSH**

MOSS

PEBBLE

STREAM



# Adapt

## COLLECTION

### Moss

Color 13 Splash

Moss displays ornamental interest in its many species. It lives in tandem and takes shape while covering other surfaces in its habitat. This organic design resembles the formation of moss as it flourishes on tree bark in the forest.

BRUSH

**MOSS**

PEBBLE

STREAM



# Adapt

## COLLECTION

### Moss

Color 13 Splash

Moss displays ornamental interest in its many species. It lives in tandem and takes shape while covering other surfaces in its habitat. This organic design resembles the formation of moss as it flourishes on tree bark in the forest.

BRUSH

**MOSS**

PEBBLE

STREAM



# Adapt

## COLLECTION

### Pebble

Color 13 Splash

Pebble tailors to its environment. Some pebbles drift, some sparkle in the sunlight, others may become hidden in the earth after a heavy rain. This small scale texture combines well with all of the patterns in the collection to create an effortless foundation to any space.

BRUSH

MOSS

**PEBBLE**

STREAM



# Adapt

## COLLECTION

### Stream

Color 13 Splash

Stream produces a natural ebb and flow that is affected by elements in its environment. Waterways sometimes move rapidly while other times they move more slowly. The fluid movement of Stream creates an understated linear design that changes subtly in density.

BRUSH

MOSS

PEBBLE

**STREAM**



# Adapt

## COLLECTION

### Stream

Color 13 Splash

Stream produces a natural ebb and flow that is affected by elements in its environment. Waterways sometimes move rapidly while other times they move more slowly. The fluid movement of Stream creates an understated linear design that changes subtly in density.

BRUSH

MOSS

PEBBLE

**STREAM**





# Adapt

## COLLECTION

### Brush + Stream

**Color** 13 Splash

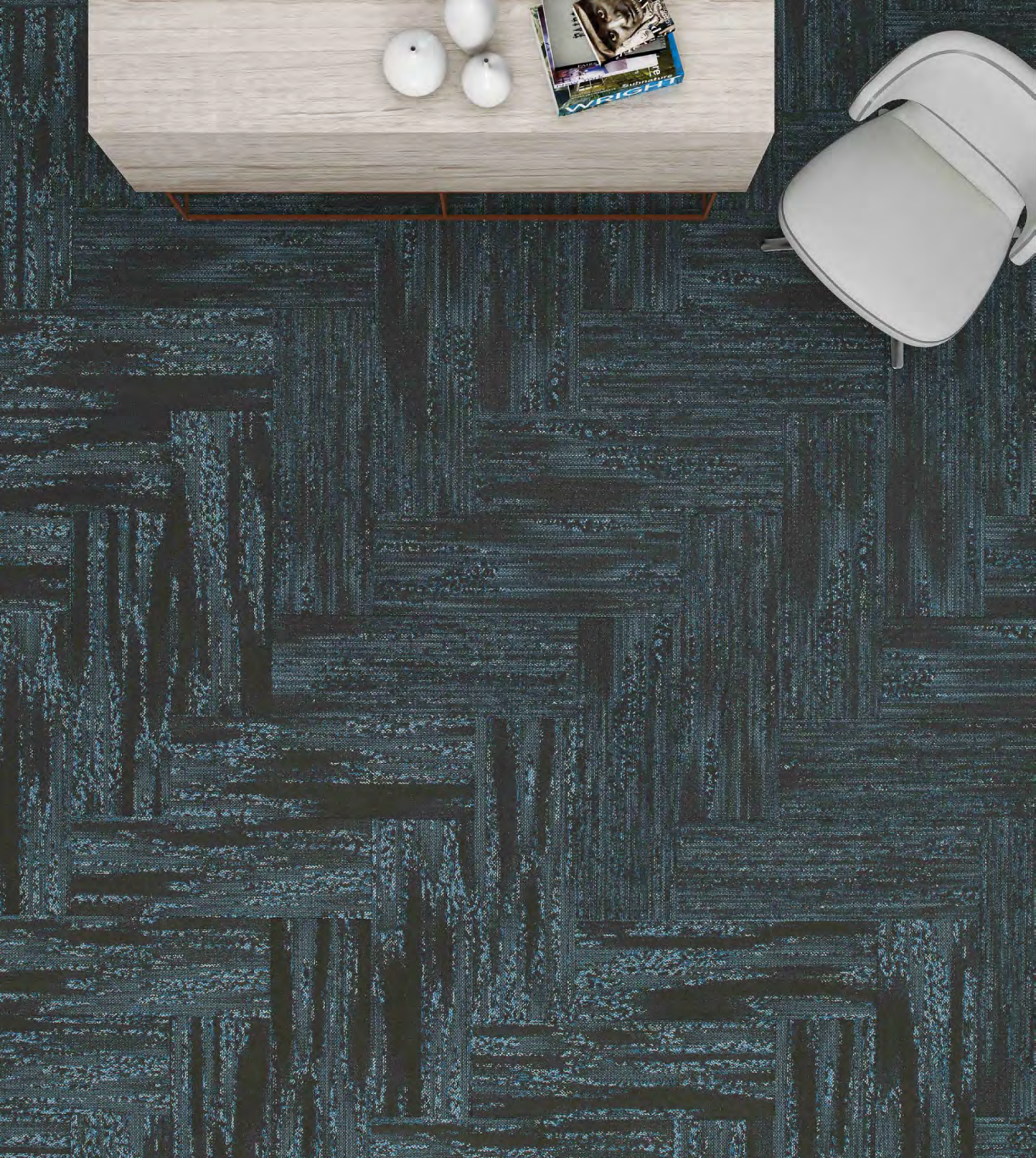
Produced on Infinity loop technology for superior performance, the Adapt Collection is suitable for a wide variety of applications spanning from corporate workspaces to healthcare to multi-family housing.

BRUSH

MOSS

PEBBLE

STREAM



# Adapt

## COLLECTION

### Stream + Moss

**Color** 13 Splash

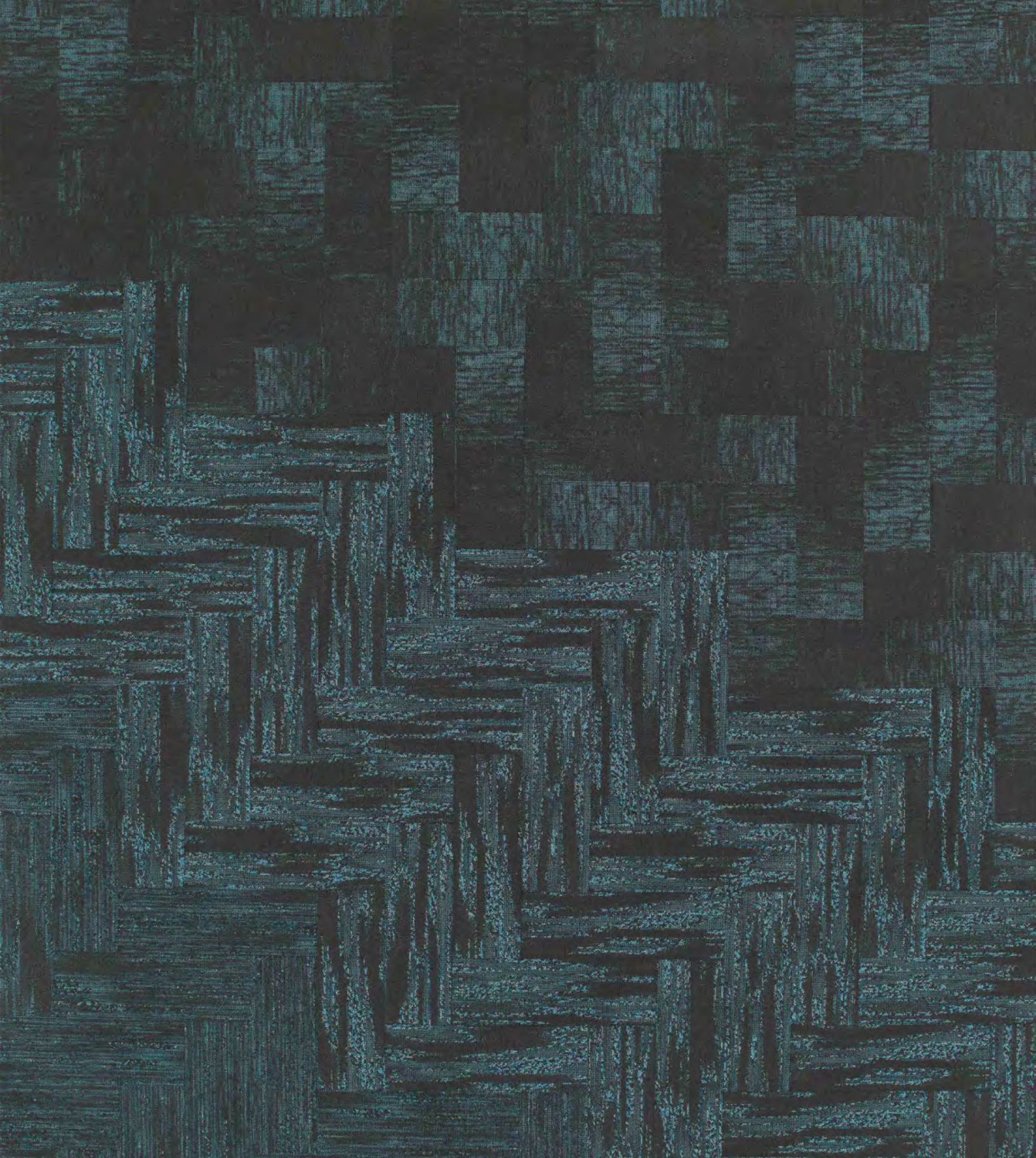
Produced on Infinity loop technology for superior performance, the Adapt Collection is suitable for a wide variety of applications spanning from corporate workspaces to healthcare to multi-family housing.

BRUSH

MOSS

PEBBLE

STREAM



# Adapt

## COLLECTION

### **Brush + Moss + Stream**

**Color** 13 Splash

Produced on Infinity loop technology for superior performance, the Adapt Collection is suitable for a wide variety of applications spanning from corporate workspaces to healthcare to multi-family housing.

BRUSH

MOSS

PEBBLE

STREAM



# Adapt

## COLLECTION

### **Pebble + Stream + Moss**

**Color** 13 Splash

Produced on Infinity loop technology for superior performance, the Adapt Collection is suitable for a wide variety of applications spanning from corporate workspaces to healthcare to multi-family housing.

BRUSH

MOSS

PEBBLE

STREAM



Color 01  
**Reed**



Color 02  
**Scenic Trail**



Color 03  
**Mineral**



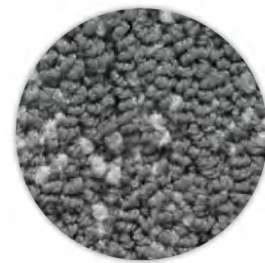
Color 04  
**Drizzle**



Color 05  
**Gravel**



Color 06  
**Greenery**



Color 07  
**Misty**



Color 08  
**Shaded**



Color 09  
**Black Ice**



Color 10  
**Waterfall**



Color 11  
**Blue Ridge**



Color 12  
**Oil Slick**



Color 13 **Splash** | SHOWN FOR ALL IMAGERY

# Adapt

## COLLECTION

### Color Line

Each of the patterns are available in thirteen Antron® Lumena™ solution dyed type 6,6 nylon colorways.

For the most accurate color representation, please request a sample by clicking on the **Order Samples** button below.

BRUSH

MOSS

PEBBLE

STREAM

## ADAPT COLLECTION

	Brush (BU)	Moss (MS)	Pebble (PB)	Stream (TT)
Yarn Content	Antron® LUMENA™ solution dyed type 6,6 nylon (SCS-EPP-01226, an Environmentally Preferable Product certified by SCS)			
Gauge	1/12	1/12	1/12	1/12
Tufted Yarn Weight	22 oz/sq yd	24 oz/sq yd	24 oz/sq yd	22 oz/sq yd
Average Yarn Pile Height	.188	.188	.219	.188
Average Yarn Density	4,503	4,922	4,164	4,503
Running Line & Custom Colors	13 running line colors. Custom colors available at minimum yardage. Please contact your Atlas sales associate.			

### Carpet Tile

	Brush (BU)	Moss (MS)	Pebble (PB)	Stream (TT)
Tile Size	12" x 36"	12" x 36"	12" x 36"	12" x 36"
Approved Installation Methods	Ashlar-monolithic Herringbone	Ashlar-monolithic Herringbone	Ashlar-monolithic Herringbone	Ashlar-monolithic Herringbone
Backing System	Perma-tile vinyl backing system with recycled content. Approximate backing thickness is 0.12 inches. Approximate total thickness is 0.28 inches.			

### General Guidelines

Quality Assurance	All certified carpets of Antron® LUMENA™ solution dyed type 6,6 nylon meet strict performance and construction standards set by Invista to assure the highest quality carpet. The Antron® LUMENA™ solution dyed type 6,6 nylon polymer provides superior resistance to crushing, matting, and wear.
Soil Retardant	DuraTech®, a patented soil resistance technology, is only available on styles of Antron® type 6,6 nylon.
Static Control	Antron® LUMENA™ solution dyed nylon type 6,6 carries a limited lifetime antistatic protection warranty not to exceed 3.5kV.
Flammability Ratings	ASTM E668 Flooring Radiant Panel Test: Class I. ASTM E662 NBS Smoke Chamber Test: < 450 in the Flaming Mode.
Environmental	Complete details on contributions to LEED, CRI Green Label Plus, NSF/ANSI 140-2015, HPD's and EPD's can be found on the Atlas website in the Resources tab under Environmental.
Warranty	Antron® LUMENA™ solution dyed nylon type 6,6 carries a Limited 10-Year Wear Warranty. See written warranties.
©Invista	All Rights Reserved. Antron® and the Antron® family of marks and logos are trademarks of INVISTA.
©Atlas	These patterns are protected under federal copyright law and may not be duplicated without Atlas' express written permission.

### Atlas

Los Angeles Showroom	2200 Saybrook Avenue, Los Angeles, CA 90040 (800) 367-8188
Chicago Showroom	TheMart (866) 527-9870
New York City Showroom	New York Design Center (800) 223-0323
atlas carpet mills.com	Visit us on-line at atlas carpet mills.com for additional product offerings, detailed specifications, installation instructions, maintenance and warranty information.

# Adapt

## COLLECTION

## Specifications

BRUSH

MOSS

PEBBLE

STREAM